

Flavour Physics with SuperIso

S. Neshatpour^{a,*} and F. Mahmoudi^{a,b}

^a*Univ Lyon, Univ Claude Bernard Lyon 1, CNRS/IN2P3, IP2I Lyon, UMR 5822, F-69622, Villeurbanne, France*

^b*Theoretical Physics Department, CERN, CH-1211 Geneva 23, Switzerland*

E-mail: siavash.neshatpour@univ-lyon1.fr , nazila@cern.ch

We describe SuperIso v4.1, a public code for calculation of flavour observables, in the Standard Model and for New Physics scenarios in a model-independent way as well as for specific beyond the SM models such as two Higgs doublet models (2HDM), minimal supersymmetric Standard Model (MSSM) and next-to-minimal supersymmetric Standard Model (NMSSM).

*Tools for High Energy Physics and Cosmology - TOOLS2020
2-6 November, 2020
Institut de Physique des 2 Infinis (IP2I), Lyon, France*

*Speaker

1. Introduction

The Standard Model of Particle Physics has had a remarkable agreement with experimental measurements. Nonetheless, there are strong reasons to believe that there is New Physics (NP) beyond the Standard Model. Direct searches for new particles predicted from these models are ongoing at particle accelerators. Complementary to these direct searches are indirect searches for new particles which can contribute as virtual states both in Flavour Changing Charged Current (FCCC) transitions as well as in Flavour Changing Neutral Current (FCNC) processes. Flavour observables are effective indirect probes of NP, especially in FCNC processes as they only occur through virtual loops in the SM and hence are suppressed. Comparison of the theoretical predictions for observables relevant to these decays with their experimental measurements could unveil the presence of heavy particles propagating in the loops - particles not accounted for in the Standard Model. This approach was used to estimate the large top quark mass before it was actually measured at the Tevatron, and ever since has become one of the main approaches for searching for the effect of New Physics at low energies.

SuperIso is a public C program [1–3] dedicated to calculating flavour physics observables in the SM and in beyond the SM scenarios. Besides flavour observables which are described in the next section other observables such as the muon anomalous moment a_μ , electroweak precision tests; oblique parameters (S, T, U), ρ, Γ_z are implemented in SuperIso. Moreover, direct search limits from LEP and Tevatron are also available. Furthermore in a separate code, SuperIso Relic [4–6], which is an extension of SuperIso, observables related to dark matter direct and indirect detections can be considered.

2. Flavour observables

Flavour observables implemented in SuperIso can be categorized into two groups of FCNC and FCCC transitions.

The FCNC processes include the branching ratio of radiative decays such as the inclusive $B \rightarrow X_{s,d}\gamma$, and the exclusive $B \rightarrow K^*\gamma$ which are mostly sensitive to C_7 , the Wilson coefficient of the radiative penguin operator. The branching ratios of the leptonic decays $K_{L,S} \rightarrow \ell^+\ell^-$ and $B_{s,d} \rightarrow \ell^+\ell^-$ are sensitive to the axial-vector Wilson coefficient C_{10} as well as scalar and pseudo scalar operators putting strong constraints on models involving an extended Higgs sector. For semileptonic FCNC decays besides the branching ratios, there are several angular observables available giving access to different combinations of the aforementioned Wilson coefficients as well as to the vector Wilson coefficient C_9 . The semileptonic decays and their corresponding observables implemented in SuperIso are

- $B \rightarrow X_s \ell^+ \ell^-$: BR, A_{FB} , zero-crossing $q_0^2(A_{\text{FB}})$
- $B^{(+)} \rightarrow K^{*(+)} \ell^+ \ell^-$: BR, A_{FB} , zero-crossing $q_0^2(A_{\text{FB}})$, $F_L, A_T^i, P_i^{(\prime)}, S_i, R_{K^*}$
- $B_s \rightarrow \phi \ell^+ \ell^-$: BR, $P_i^{(\prime)}, S_i, R_\phi$
- $B^{(+)} \rightarrow K^{(+)} \ell^+ \ell^-$: BR, A_{FB}, F_H, R_K

- $\Lambda_b^+ \rightarrow \Lambda \ell^+ \ell^-$: BR, A_{FB} , F_L
- $K^+ \rightarrow \pi^+ \nu \bar{\nu}$: BR
- $K_L \rightarrow \pi^0 \nu \bar{\nu}$: BR

where BR refers to the branching ratio, A_{FB} to the Forward-Backward asymmetry and the definition of the angular observables S_i , and $P_i^{(\prime)}$ can be found in Refs. [7, 8]. R_H is the lepton flavour universality observable $\text{BR}(B_{(s)} \rightarrow H \mu^+ \mu^-) / \text{BR}(B_{(s)} \rightarrow H e^+ e^-)$ with $H = K, K^*, \phi$ as proposed in Ref. [9]. Furthermore, the $\Delta S = 2$ Wilson coefficients can be probed via the $B_{d,s}$ meson-mixing observables.

In the FCCC category, the branching ratios of $B \rightarrow \ell \nu$, $B \rightarrow D^{(*)} \ell \nu$, $D_s \rightarrow \ell \nu$, $D \rightarrow \mu \nu$ and $K \rightarrow \mu \nu$ are among the most important observables, that are implemented in SuperIso.

3. Installation

The SuperIso code can be downloaded from <http://superiso.in2p3.fr> which upon unpacking creates the main directory `superiso_vX.X`.

The main directory includes thirteen main programs predicting observables in different models; `sm.c` calculates a few sample flavour observables in the SM, while `amsb.c`, `cmssm.c`, `cnmssm.c`, `gmsb.c`, `hcamsb.c`, `mmamsb.c`, `ngmsb.c`, `nnuhm.c`, `nuhm.c`, `thdm.c` make predictions in specific NP models (which require to be linked to one of the external spectrum generator programs ISAJET [10], NMSSMTools [11], SOFTSUSY [12], SPheno [13], SuSpect [14], 2HDMC [15], etc.) and `flha.c` and `slha.c` predict observable values taking as input a file of FLHA and SLHA format, respectively (a sample `example.lha` input file in the SLHA format is included).

In the main directory there are three programs calculating the χ^2 for a sample predefined set of flavour observables. `sm_chi2.c` calculates the χ^2 for the SM, while `modelindep_chi2.c` and `slha_chi2.c` give the χ^2 within a model-independent scenario taking sample Wilson coefficients as inputs and using a SLHA type input, respectively.

There is also a README file as well a Makefile file in the main directory where in the latter the compiler can be specified. By default, the compiler is set to `gcc` in Makefile. If `gcc` is available on your system the code can be compiled by simply typing `make` in the terminal which creates `libisospin.a` in `src/`. The provided main programs can then be compiled by typing `make name` where `name` is any of the sixteen mentioned main programs, creating an executable program with the `.x` extension (e.g. `make sm.c` creates `sm.x`). Further information is available in the README file or the manual which can be downloaded from the SuperIso website <http://superiso.in2p3.fr/superiso4.1.pdf>.

4. Global fits

In recent years, the strongest signs of New Physics have been observed in flavour physics, especially in flavour changing neutral current processes with quark level exchange $b \rightarrow s$. However, the numerous flavour observables are interconnected via Wilson coefficients, and in order to have a

consistent view of the implications of experimental measurements and possible anomalies in flavour physics observables, the global behaviour should be considered. This can be done by considering the χ^2 of the chosen set of Wilson coefficients

$$\chi^2 = \sum_{i,j=1}^N \left(O_i^{\text{th}} - O_i^{\text{exp}} \right) C_{ij}^{-1} \left(O_j^{\text{th}} - O_j^{\text{exp}} \right), \quad (1)$$

where O_i^{th} and O_i^{exp} correspond to the theoretical prediction and experimental measurement of the i -th observable, respectively. $C_{i,j}$ denotes the (i, j) element of the total covariance matrix which is the sum of the theoretical and experimental covariance matrices

$$C_{i,j} = \text{Cov}_{\text{th}}(O_i, O_j) + \text{Cov}_{\text{exp}}(O_i, O_j). \quad (2)$$

In SuperIso, for Cov_{exp} we take the covariance matrix provided by the experiment (when available) while for Cov_{th} we calculate it assuming the nuisance parameters have Gaussian distribution and that the observables are linearly dependent on them [16], i.e. the total variation of O_i at first order is given by

$$O_i = O_i^{(0)} \left(1 + \sum_{a=1} \delta_a \Delta_{O_i}^a \right), \quad (3)$$

where $O_i^{(0)}$ is the central value, δ_a denotes the variation of nuisance parameters a and $\Delta_{O_i}^a$ is the relative variance of observable O_i generated by the nuisance parameter. The correlation coefficient between the O_i and O_j observables is given by

$$\left(\Delta_{O_i, O_j} \right)^2 = \sum_{a,b} \rho_{ab} \Delta_{O_i}^a \Delta_{O_j}^b, \quad (4)$$

where ρ_{ab} is the covariance between the nuisance parameters a and b . The theoretical covariance matrix is then defined as

$$\text{Cov}_{\text{th}} = \begin{pmatrix} \left(\Delta_{O_i, O_i} \right)^2 \left(O_i^{(0)} \right)^2 & \left(\Delta_{O_i, O_j} \right)^2 O_i^{(0)} O_j^{(0)} \\ \left(\Delta_{O_i, O_j} \right)^2 O_i^{(0)} O_j^{(0)} & \left(\Delta_{O_j, O_j} \right)^2 \left(O_j^{(0)} \right)^2 \end{pmatrix}. \quad (5)$$

By default in SuperIso, each nuisance parameter is varied within one standard deviation and the covariance matrix C_{ij} is calculated for the SM and used for other models. While it is possible to calculate the covariance matrix for every New Physics point, when doing a large scan over the parameter space, it will be time-consuming as for each point it takes a few seconds when considering around hundred observables. A comparison between a 3-dimensional global fit to Wilson coefficients $\{C_7, C_9, C_{10}\}$ when recalculating the covariance matrix for each point versus considering the one calculated for SM at all points has been done in Ref. [17] (see Fig. 1) using SuperIso as part of FlavBit/GAMBIT [18] indicating that using the covariance matrix calculated for the SM at all points is a reasonable approximation.

In SuperIso it is also possible to consider the nuisance parameters as free parameters that can be fitted. This is relevant for the case where there is a lack of precise knowledge on these

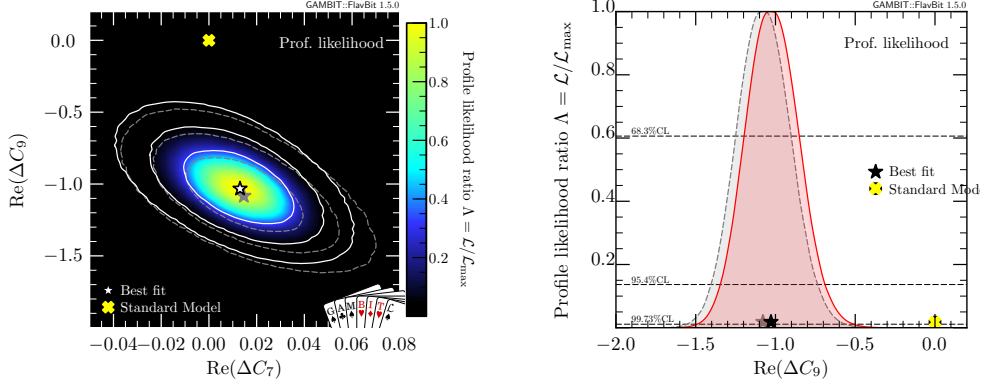


Figure 1: Two- and one-dimensional profile likelihoods for (C_7, C_{10}) and C_9 from Ref. [17]. The white (red) contour (curve) in the two (one)-dimensional result corresponds to the fit when the covariance matrix is recalculated for each point while the the grey contour (curve) is given for when using the SM covariance matrix for all points.

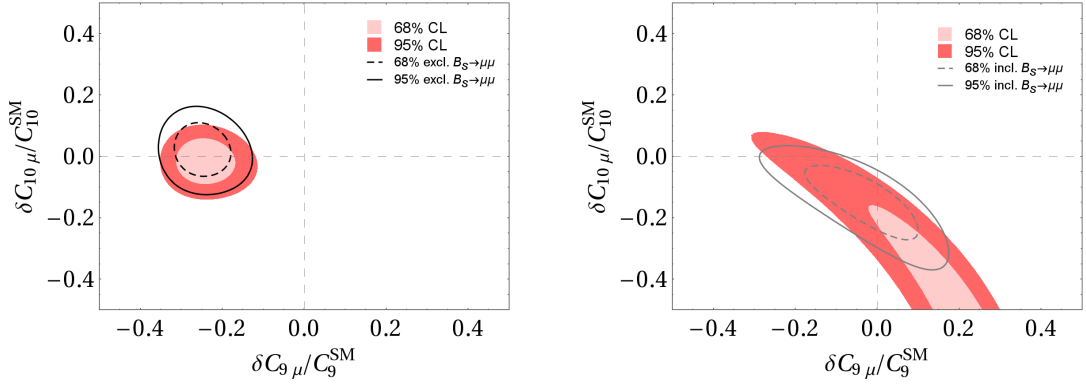


Figure 2: Fit of (C_9^μ, C_{10}^μ) to all observables except R_K and R_{K^*} on the left and to only the data on R_K, R_{K^*} on the right from Ref. [22]. The red (light-red) contours correspond to 68% (95%) confidence level. The dashed grey (solid black) contours correspond to including (excluding) the data on $B_{s,d} \rightarrow \mu^+ \mu^-$.

parameters. Such fits have been done in Refs. [19–21] for the power corrections that contribute to $B \rightarrow K^* \mu^+ \mu^-$ observables, as the size of the hadronic corrections are not well-known and they can impact the significance of short-distance NP fits.

Using a subset of observables the coherence of the implications of various measurements can be analysed. In Fig. 2 Wilson coefficients fits for (C_9^μ, C_{10}^μ) are given when considering two sets of observables; lepton flavour violating ratios $R_{K^{(*)}}$ and the rest of $b \rightarrow s \ell^+ \ell^-$ observables, indicating agreement at 2σ level [22]. Another comparison of different sets of observables using SuperIso can be found in Ref. [23] where the coherence of the angular observables of the neutral $B^0 \rightarrow K^{*0} \mu^+ \mu^-$ decay [24] and its charged counterpart, the $B^+ \rightarrow K^{*+} \mu^+ \mu^-$ decay [25] are studied.

It is also possible to consider global fits in specific New Physics models or to check the effect of specific model parameters on individual observables. In Fig. 3 from Ref. [26] the angular observable

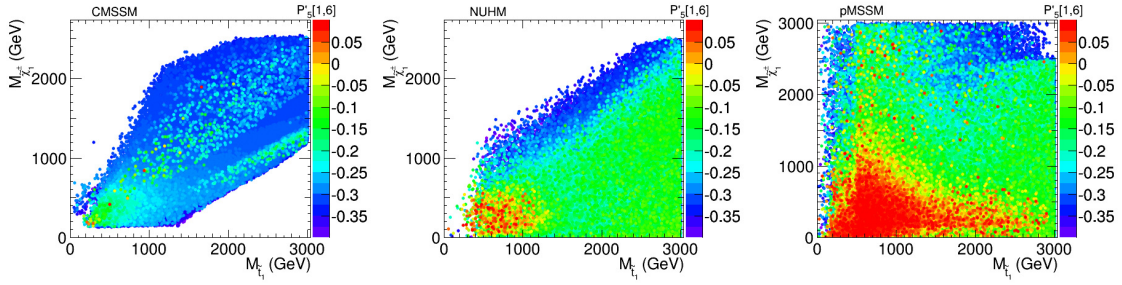


Figure 3: $P'_5(B \rightarrow K^* \mu^+ \mu^-)$ in the $[1, 6]$ GeV^2 bin in the $(M_{\tilde{t}_1}, M_{\tilde{\chi}_1^\pm})$ plane for CMSSM on the left, NUHM in the middle and pMSSM on the right from Ref. [26]. The most recent experimental measurement by LHCb [24] for P'_5 in the $[1.1, 6]$ GeV^2 bin is $-0.144 \pm 0.068 \pm 0.026$ and its SM prediction is -0.39 ± 0.1 .

$P'_5(B \rightarrow K^* \mu^+ \mu^-)$ (which is one of the main observables having tension with the SM predictions) is given as a function of MSSM parameters the chargino and stop masses in the constrained MSSM models CMSSM, the Non Universal Higgs Mass (NUHM) and the more general phenomenological MSSM (pMSSM).

Besides the specific models for which main programs are available in SuperIso where the Wilson coefficients are automatically calculated once the model parameters are provided through spectrum generators, SuperIso can calculate flavour observables for any other New Physics models if the relevant Wilson coefficients are given. In the near future there is going to be a direct interface to MARTY [27] which is a C++ public code capable of calculating Wilson coefficients for generic beyond the SM scenarios.

5. Conclusions

Flavor observables are powerful probes of New Physics models and currently offer the most promising signs of New Physics. Numerous flavour observables are implemented in SuperIso which can be used to study beyond the Standard Model scenarios both in a model-independent way as well as in specific models such as 2HDM and Supersymmetric models.

Acknowledgments

The speaker, SN, is grateful to the TOOLS 2020 organisers for their invitation to present this work.

References

- [1] F. Mahmoudi, *SuperIso: A Program for calculating the isospin asymmetry of $B \rightarrow K^* \gamma$ in the MSSM*, *Comput. Phys. Commun.* **178** (2008) 745 [0710.2067].
- [2] F. Mahmoudi, *SuperIso v2.3: A Program for calculating flavor physics observables in Supersymmetry*, *Comput. Phys. Commun.* **180** (2009) 1579 [0808.3144].

- [3] F. Mahmoudi, *SuperIso v3.0, flavor physics observables calculations: Extension to NMSSM*, *Comput. Phys. Commun.* **180** (2009) 1718.
- [4] A. Arbey and F. Mahmoudi, *SuperIso Relic: A Program for calculating relic density and flavor physics observables in Supersymmetry*, *Comput. Phys. Commun.* **181** (2010) 1277 [0906.0369].
- [5] A. Arbey and F. Mahmoudi, *SuperIso Relic v3.0: A program for calculating relic density and flavour physics observables: Extension to NMSSM*, *Comput. Phys. Commun.* **182** (2011) 1582.
- [6] A. Arbey, F. Mahmoudi and G. Robbins, *SuperIso Relic v4: A program for calculating dark matter and flavour physics observables in Supersymmetry*, *Comput. Phys. Commun.* **239** (2019) 238 [1806.11489].
- [7] W. Altmannshofer, P. Ball, A. Bharucha, A.J. Buras, D.M. Straub and M. Wick, *Symmetries and Asymmetries of $B \rightarrow K^* \mu^+ \mu^-$ Decays in the Standard Model and Beyond*, *JHEP* **01** (2009) 019 [0811.1214].
- [8] S. Descotes-Genon, T. Hurth, J. Matias and J. Virto, *Optimizing the basis of $B \rightarrow K^* l l$ observables in the full kinematic range*, *JHEP* **05** (2013) 137 [1303.5794].
- [9] G. Hiller and F. Kruger, *More model-independent analysis of $b \rightarrow s$ processes*, *Phys. Rev.* **D69** (2004) 074020 [hep-ph/0310219].
- [10] F.E. Paige, S.D. Protopopescu, H. Baer and X. Tata, *ISAJET 7.69: A Monte Carlo event generator for pp , anti- $p p$, and $e+e-$ reactions*, hep-ph/0312045.
- [11] U. Ellwanger and C. Hugonie, *NMHDECAY 2.0: An Updated program for sparticle masses, Higgs masses, couplings and decay widths in the NMSSM*, *Comput. Phys. Commun.* **175** (2006) 290 [hep-ph/0508022].
- [12] B.C. Allanach, *SOFTSUSY: a program for calculating supersymmetric spectra*, *Comput. Phys. Commun.* **143** (2002) 305 [hep-ph/0104145].
- [13] W. Porod, *SPheno, a program for calculating supersymmetric spectra, SUSY particle decays and SUSY particle production at $e+e-$ colliders*, *Comput. Phys. Commun.* **153** (2003) 275 [hep-ph/0301101].
- [14] A. Djouadi, J.-L. Kneur and G. Moultaka, *SuSpect: A Fortran code for the supersymmetric and Higgs particle spectrum in the MSSM*, *Comput. Phys. Commun.* **176** (2007) 426 [hep-ph/0211331].
- [15] D. Eriksson, J. Rathsman and O. Stal, *2HDMC: Two-Higgs-Doublet Model Calculator Physics and Manual*, *Comput. Phys. Commun.* **181** (2010) 189 [0902.0851].
- [16] A. Arbey, S. Fichet, F. Mahmoudi and G. Moreau, *The correlation matrix of Higgs rates at the LHC*, *JHEP* **11** (2016) 097 [1606.00455].

- [17] J. Bhom, M. Chrzaszcz, F. Mahmoudi, M.T. Prim, P. Scott and M. White, *A model-independent analysis of $b \rightarrow s\mu^+\mu^-$ transitions with GAMBIT's FlavBit*, 2006.03489.
- [18] GAMBIT FLAVOUR WORKGROUP collaboration, *FlavBit: A GAMBIT module for computing flavour observables and likelihoods*, *Eur. Phys. J.* **C77** (2017) 786 [1705.07933].
- [19] V.G. Chobanova, T. Hurth, F. Mahmoudi, D. Martinez Santos and S. Neshatpour, *Large hadronic power corrections or new physics in the rare decay $B \rightarrow K^*\mu^+\mu^-$?*, *JHEP* **07** (2017) 025 [1702.02234].
- [20] A. Arbey, T. Hurth, F. Mahmoudi and S. Neshatpour, *Hadronic and New Physics Contributions to $b \rightarrow s$ Transitions*, *Phys. Rev.* **D98** (2018) 095027 [1806.02791].
- [21] T. Hurth, F. Mahmoudi and S. Neshatpour, *Implications of the new LHCb angular analysis of $B \rightarrow K^*\mu^+\mu^-$: Hadronic effects or new physics?*, *Phys. Rev.* **D102** (2020) 055001 [2006.04213].
- [22] A. Arbey, T. Hurth, F. Mahmoudi, D.M. Santos and S. Neshatpour, *Update on the $b \rightarrow s$ anomalies*, *Phys. Rev.* **D100** (2019) 015045 [1904.08399].
- [23] T. Hurth, F. Mahmoudi and S. Neshatpour, *Model independent analysis of the angular observables in $B^0 \rightarrow K^{*0}\mu^+\mu^-$ and $B^+ \rightarrow K^{*+}\mu^+\mu^-$* , 2012.12207.
- [24] LHCb collaboration, *Measurement of CP-Averaged Observables in the $B^0 \rightarrow K^{*0}\mu^+\mu^-$ Decay*, *Phys. Rev. Lett.* **125** (2020) 011802 [2003.04831].
- [25] LHCb collaboration, *Angular analysis of the $B^+ \rightarrow K^{*+}\mu^+\mu^-$ decay*, 2012.13241.
- [26] F. Mahmoudi, S. Neshatpour and J. Virto, *$B \rightarrow K^*\mu^+\mu^-$ optimised observables in the MSSM*, *Eur. Phys. J.* **C74** (2014) 2927 [1401.2145].
- [27] G. Uhlich, F. Mahmoudi and A. Arbey, *MARTY – Modern ARTificial Theoretical physicist: A C++ framework automating symbolic calculations Beyond the Standard Model*, 2011.02478.