

Yukawa couplings for light stringy states

Pascal Anastasopoulos*

Technische Univ. Wien Inst. für Theoretische Physik, A-1040 Vienna, Austria

E-mail: pascal@hep.itp.tuwien.ac.at

Massimo Bianchi

Dipartimento di Fisica, Università di Roma "Tor Vergata" &

I.N.F.N. Sezione di Roma "Tor Vergata", Via della Ricerca Scientifica, 00133 Roma, Italy

E-mail: massimo.bianchi@roma2.infn.it

Dario Consoli

Dipartimento di Fisica, Università di Roma "Tor Vergata", Via della Ricerca Scientifica, 00133 Roma, Italy

E-mail: dario.consoli@roma2.infn.it

This proceeding is based on [1], where we use 4-point amplitudes in order to normalize the vertex operators for massless and massive strings living at D-brane intersections and next to evaluate Yukawa couplings between these states. Using our results we are planning to proceed and evaluate physical processes which might be visible at LHC.

*The European Physical Society Conference on High Energy Physics
5-12 July, 2017
Venice*

*Speaker.

1. Introduction

Open string compactifications provide a very successful framework for semi-realistic model building¹. In this class of models the gauge fields are described by strings with both ends on the same stack of some lower-dimensional hyperplanes, called D-branes, whereas the chiral matter is localised at the intersection of different D-brane stacks. Thus, all the Standard Model fields can be described by open strings with either both of their ends on the same stack (gluons, SU(2) gauge fields and the Hypercharge) or on different stacks of D-branes (quarks, leptons and the Higgs)².

A novel property of this class of models is that the string scale can be significantly low, even at a few TeV range [26–28]. Therefore, stringy effects become viable candidates for physics beyond the Standard Model (see for example anomalous Z' [29–42], Kaluza Klein states [43–49], or purely stringy signatures [50–63]³.

A string living at the intersection of two different stacks of D-branes, it vibrates with frequencies proportional to the angle between the branes θ . Thus, a whole tower of massive copies of the lowest/massless mode is living at the same intersection, with masses proportional to $\sqrt{\theta}M_s$. Notice that the first excited mode will be lighter than the standard Regge excitations by a factor θ/π . As a consequence, semi-realistic D-brane configurations predict massive copies for all matter fields of the Standard Model. If the string scale M_s is at a few TeV range, these copies can be very light (*light stringy states*) and they might be visible at LHC [66–69].

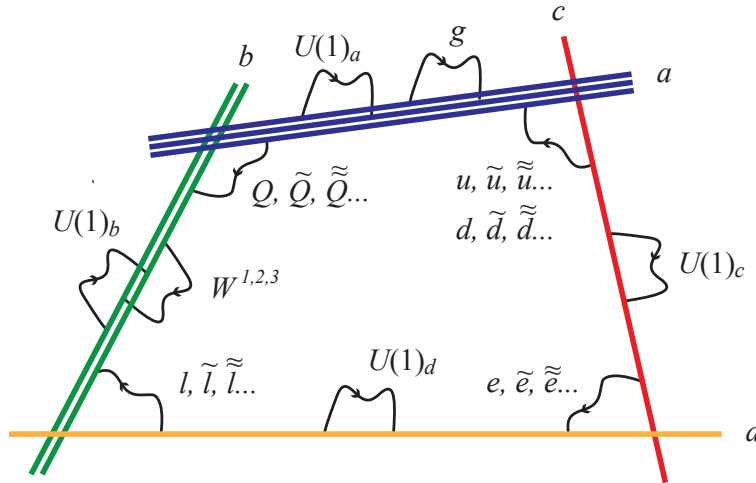


Figure 1: Local D-brane realization of the Standard Model. Each field is accompanied by a whole tower of massive excitations.

In [1] we compute Yukawa couplings between light stringy states and massless ones. In order to determine the correct normalization of the vertex operators (VO) [70, 71] of the fields mentioned above, we evaluate four-point amplitudes and by factorizations we extract the desired couplings. In

¹For original work, see [2–14] and for recent reviews on D-brane model building, see [15–19] and references therein.

²For original work on local D-brane configurations, see [20, 21]. For a systematic analysis of local D-brane configurations, see [22–25].

³For recent reviews, see [64, 65].

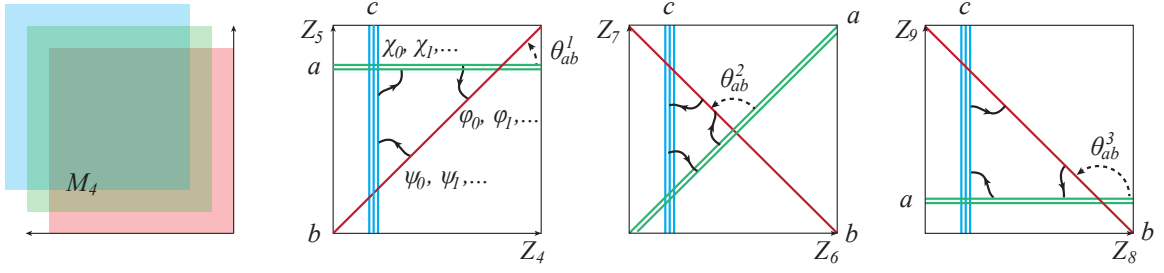


Figure 2: A simple configuration of three stacks of D6-branes in a torus T_I^2 . The angles in the figure are large for illustrative purposes.

this proceeding we present few examples which demonstrate our strategy and the rest of the results can be found in the original work [1].

The plan of this proceeding is as follows. In Section 2, we describe the set-up of intersecting D6-branes on tori and present the expressions for both massless and massive BRST invariant vertex operators. In Section 3 we compute scattering amplitudes on the disk (tree level). Normalization problems are solved by first considering amplitudes that expose vector boson exchange on one or both channels (s and t).

2. Setup and vertex operators

In order to compute gauge and Yukawa couplings of light massive string states we have to specify our setup. We consider three stacks of D6-branes wrapping factorizable 3-cycles on a six-torus $T^6 = T^2 \times T^2 \times T^2$, which are labeled by a , b and c . In each torus T_I^2 ($I = 1, 2, 3$) two generic stacks, let us say a and b , intersecting at an angle $\theta_{ab}^I = \pi a_{ab}^I$ (next we will use the angles a_{ab}^I subtracting π for simplicity). Supersymmetry requires $\pm a_{ab}^1 \pm a_{ab}^2 \pm a_{ab}^3 = 0 \pmod{2}$, for some choice of signs⁴. For non-vanishing Yukawa couplings, we take

$$a_{ab}^1 + a_{ab}^2 + a_{ab}^3 = 0 \quad 0 < a_{ab}^1 < 1 \quad 0 < a_{bc}^1 < 1 \quad -1 < a_{ca}^1 < 0 \quad (2.1)$$

$$a_{bc}^1 + a_{bc}^2 + a_{bc}^3 = 0 \quad 0 < a_{ab}^2 < 1 \quad 0 < a_{bc}^2 < 1 \quad -1 < a_{ca}^2 < 0 \quad (2.2)$$

$$a_{ca}^1 + a_{ca}^2 + a_{ca}^3 = -2 \quad -1 < a_{ab}^3 < 0 \quad -1 < a_{bc}^3 < 0 \quad -2 < a_{ca}^3 < 0 \quad (2.3)$$

Strings ending on two different stacks of branes give rise to a massless (chiral) spectrum with multiplicity given by the number of intersections and a massive spectrum. The VO's for the lowest string modes (massless and first massive) living at intersections are given by [70]

$$V_{\phi_0 = \phi_0^{ab}}^{(-1)} = C_{\phi_0} e^{-\phi_{10}} \phi_0 e^{-\varphi} \sigma_{a,b}^{\alpha_1} \sigma_{a,b}^{\alpha_2} \sigma_{1+a_{a,b}^3} e^{i[a_{a,b}^1 \varphi_1 + a_{a,b}^2 \varphi_2 + (a_{a,b}^3 + 1) \varphi_3]} e^{ikX} \quad (2.4)$$

$$V_{\psi_0 = \chi_0^{bc}}^{(-\frac{1}{2})} = C_{\psi_0} e^{-\phi_{10}} \psi_0^\alpha S_\alpha e^{-\frac{\varphi}{2}} \sigma_{a,b,c}^{\alpha_1} \sigma_{a,b,c}^{\alpha_2} \sigma_{1+a_{b,c}^3} e^{i[(a_{b,c}^1 - \frac{1}{2}) \varphi_1 + (a_{b,c}^2 - \frac{1}{2}) \varphi_2 + (a_{b,c}^3 + \frac{1}{2}) \varphi_3]} e^{ikX} \quad (2.5)$$

$$V_{\chi_0 = \chi_0^{ca}}^{(-\frac{1}{2})} = C_{\chi_0} e^{-\phi_{10}} \chi_0^\alpha S_\alpha e^{-\frac{\varphi}{2}} \sigma_{1+a_{c,a}^1} \sigma_{1+a_{c,a}^2} \sigma_{1+a_{c,a}^3} e^{i[(a_{c,a}^1 + \frac{1}{2}) \varphi_1 + (a_{c,a}^2 + \frac{1}{2}) \varphi_2 + (a_{c,a}^3 + \frac{1}{2}) \varphi_3]} e^{ikX} \quad (2.6)$$

⁴Semi-realistic MSSM constructions on factorizable orbifolds can be found in [22, 72–94].

$$\begin{aligned}
V_{\psi_1=\chi_1^{bc}}^{(-\frac{1}{2})} &= C_{\psi_1} e^{-\phi_{10}} \psi_1^\alpha S_\alpha e^{-\frac{\sigma}{2}} \tau_{a_{b,c}^1} \sigma_{a_{b,c}^2} \sigma_{1+a_{b,c}^3} e^{i[(a_{b,c}^1-\frac{1}{2})\varphi_1+(a_{b,c}^2-\frac{1}{2})\varphi_2+(a_{b,c}^3+\frac{1}{2})\varphi_3]} e^{ikX} \\
&+ C_{\bar{\psi}_1} e^{-\phi_{10}} \bar{\psi}_{1\dot{\alpha}}^\dagger C^{\dot{\alpha}} e^{-\frac{\sigma}{2}} \sigma_{a_{b,c}^1} \sigma_{a_{b,c}^2} \sigma_{1+a_{b,c}^3} e^{i[(a_{b,c}^1+\frac{1}{2})\varphi_1+(a_{b,c}^2-\frac{1}{2})\varphi_2+(a_{b,c}^3+\frac{1}{2})\varphi_3]} e^{ikX} \quad (2.7)
\end{aligned}$$

$$\begin{aligned}
V_{\chi_1=\chi_1^{ca}}^{(-\frac{1}{2})} &= C_{\chi_1} e^{-\phi_{10}} \chi_1^\alpha S_\alpha e^{-\frac{\sigma}{2}} \sigma_{1+a_{c,a}^1} \sigma_{1+a_{c,a}^2} \tau_{1+a_{c,a}^3} e^{i[(a_{c,a}^1+\frac{1}{2})\varphi_1+(a_{c,a}^2+\frac{1}{2})\varphi_2+(a_{c,a}^3+\frac{1}{2})\varphi_3]} e^{ikX} \\
&+ C_{\bar{\chi}_1} e^{-\phi_{10}} \bar{\chi}_{1\dot{\alpha}}^\dagger C^{\dot{\alpha}} e^{-\frac{\sigma}{2}} \sigma_{1+a_{c,a}^1} \sigma_{1+a_{c,a}^2} \sigma_{1+a_{c,a}^3} e^{i[(a_{c,a}^1+\frac{1}{2})\varphi_1+(a_{c,a}^2+\frac{1}{2})\varphi_2+(a_{c,a}^3-\frac{1}{2})\varphi_3]} e^{ikX} \quad (2.8)
\end{aligned}$$

and the masses of the corresponding fields are

$$\text{massless : } \quad m_{\phi_0}^2 = 0 \quad , \quad m_{\psi_0}^2 = 0 \quad , \quad m_{\chi_0}^2 = 0 \quad (2.9)$$

$$\text{massive : } \quad , \quad m_{\psi_1}^2 = a_{bc}^1/\alpha' \quad , \quad m_{\chi_1}^2 = (1 - |a_{ca}^3|)/\alpha' \quad . \quad (2.10)$$

Having the expression for the VO's of the massless and massive states living at intersections, we evaluate string amplitudes and consequently the Yukawa couplings.

3. Strategy

In principle, we could directly evaluate the Yukawa couplings by 3-point amplitudes. However, these amplitudes are ambiguous due to the unnormalized VO's of the incoming fields. In order to normalize and proceed to physical amplitudes we have to start by evaluating 4-point amplitudes.

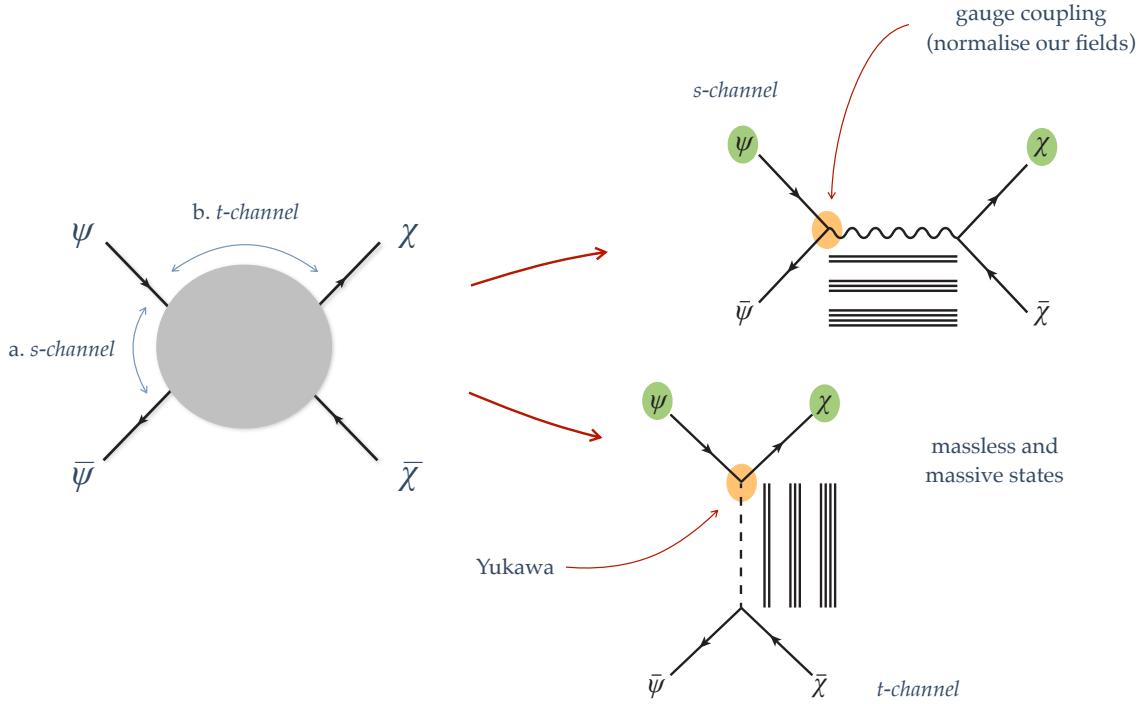


Figure 3: Factorization of the 4-point amplitude: a. At the lowest level of the s-channel we have the exchange of a gauge field which helps to normalise our fields. b. At t-channel we extract the various Yukawa couplings.

The gauge couplings plays a key role to fix the normalization of vertex operators and twist-field correlators that appear in amplitudes with gauge bosons in the external states or propagating

in intermediate channels. Once these normalizations are fixed, we extract some of the desired Yukawas via factorization. Other Yukawa's must be extracted from amplitudes without gauge bosons, in this case the previously computed/known Yukawa's replace the gauge couplings in order to fix normalizations. Schematically the strategy is given in the diagram 3.

3.1 The amplitude $\mathcal{A}(\bar{\psi}_0, \psi_0, \chi_0, \bar{\chi}_0)$

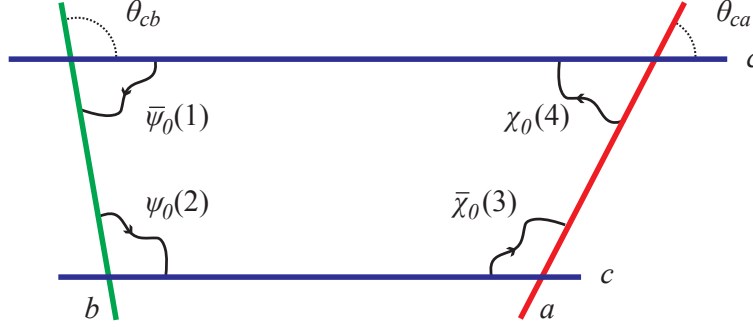


Figure 4: A configuration of branes describing the scattering between the spinors ψ_0 and χ_0 .

Following the strategy above we compute specific 4-point amplitudes. At this proceeding we present few examples. More details can be found at our original work [1].

The amplitude $\mathcal{A}(\bar{\psi}_0, \psi_0, \chi_0, \bar{\chi}_0)$ with two-independent angles yields

$$\begin{aligned} \mathcal{A}(\bar{\psi}_0^{cb}, \psi_0^{bc}, \chi_0^{ca}, \bar{\chi}_0^{ac}) &= \langle V_{\bar{\psi}_0}^{(-\frac{1}{2})} V_{\psi_0}^{(-\frac{1}{2})} V_{\chi_0}^{(-\frac{1}{2})} V_{\bar{\chi}_0}^{(-\frac{1}{2})} \rangle \\ &= g_{\text{op}}^2 \alpha' \psi_0(2) \cdot \chi_0(3) \bar{\psi}_0(1) \cdot \bar{\chi}_0(4) \int_0^1 dx x^{\alpha's-1} (1-x)^{\alpha't-1} \times \\ &\quad \times \prod_{I=1}^3 \frac{4\pi^2 K_I^{c,ab} \alpha'}{L_{a,I}^{1/4} L_{b,I}^{5/4} L_{c,I}^{1/2}} \frac{\sqrt{\alpha'}}{L_{c,I} G_1^{(I)}(x)} \sum_{n_I, m_I} e^{-S_{\text{Ham}}^{(I)}(m_I, n_I)} \end{aligned} \quad (3.1)$$

where $L_{a,I}$ is the brane a 's length in torus I . I_{ab} and similar are the number of intersections between the branes on the torus. $G_1^{(I)}(x)$ are hypergeometric functions $G_1 = {}_2F_1(\alpha, 1-\beta; 1; z)$, $G_2 = {}_2F_1(1-\alpha, \beta; 1; z)$, $K_I^{c,ab}$ is an overall normalization constant and $S_{\text{Ham}}^{(I)}(m_I, n_I)$ is the classical action in ‘‘hamiltonian’’ form:

$$S_{\text{Ham}}^{(I)}(m_I, n_I) = \frac{\pi t_I(x)}{\sin \pi |a_{bc}^I|} \left(\frac{4\pi^2 \alpha' m_I^2}{L_{c,I}^2} + \frac{\sin^2 \pi |a_{bc}^I| L_{b,I}^2}{4\pi^2 \alpha'} \frac{I_{ca,I}^2 n_I^2}{\text{gcd}^2(|I_{bc,I}|, |I_{ca,I}|)} \right) - 2\pi i \frac{m_I}{L_{c,I}} f_{\chi\psi,I} \quad (3.2)$$

In the s channel the amplitude shows a gauge boson propagating between parallel branes of type c , we can use the factorization in this channel to fix $K_I^{c,ab} = \frac{L_a^{1/4} L_b^{5/4} L_{c,I}^{1/2}}{(2\pi)^2 \alpha'}$. The vertex operators’

normalizations obtained from the amplitudes are

$$C_{A_i} = \sqrt{2\alpha'} \prod_I \left[\frac{\alpha'}{L_{i,I}^2} \right]^{1/4} \quad (3.3)$$

$$C_{\chi_0^{ij}} = (\alpha')^{1/4} \sqrt{2\alpha'} \prod_I \left[\frac{\alpha'}{L_{i,I} L_{j,I}} \right]^{1/4} \quad C_{\phi_0^{ij}} = \sqrt{2\alpha'} \prod_I \left[\frac{\alpha'}{L_{i,I} L_{j,I}} \right]^{1/4} \quad (3.4)$$

$$C_{\chi_1^{ij}} = (\alpha')^{1/4} \sqrt{2\alpha'} \prod_I \left[\frac{\alpha'}{L_{i,I} L_{j,I}} \right]^{1/4} \quad C_{\tilde{\chi}_1^{ij}} = (\alpha')^{1/4} \sqrt{2\alpha'} \prod_I \left[\frac{\alpha'}{L_{i,I} L_{j,I}} \right]^{1/4} \quad (3.5)$$

The factorization in the t channel exhibits Yukawa couplings. After Poisson resummation we get

$$\mathcal{A}(\bar{\psi}_0, \psi_0, \chi_0, \bar{\chi}_0) = g_{\text{op}}^2 \alpha' \psi_0(2) \cdot \chi_0(3) \bar{\psi}_0(1) \cdot \bar{\chi}_0(4) \int_0^1 dx x^{\alpha's-1} (1-x)^{\alpha't-3/2} \prod_{I=1}^3 \sum_{\tilde{m}_I, n_I} \frac{e^{-S_{\text{Lagr}}^{(I)}(\tilde{m}_I, n_I)}}{2\pi \sqrt{I_I(x)}} \quad (3.6)$$

where $I_I(x)$ are combinations of hypergeometric functions and $S_{\text{Lagr}}^{(I)}(\tilde{m}_I, n_I)$ is the classical action in ‘‘lagrangian’’ form. The limit $x \rightarrow 1$ has two kinds of contributions: one purely quantum, due to the expansion of $I_I(x)$, and one classical, due to the expansion of $t(x)$ in the action. The first three orders correspond to factorizations on the poles for the states ϕ_0 , ϕ_1 and ϕ_2 . Imposing

$$\mathcal{A}(\bar{\psi}_0, \psi_0, \chi_0, \bar{\chi}_0) \xrightarrow{t \rightarrow n a_{ab}^1 / \alpha'} |Y_{n00}|^2 \psi_0(2) \cdot \chi_0(3) \frac{1}{t - n a_{ab}^1 / \alpha'} \bar{\chi}_0(4) \cdot \bar{\psi}_0(1) \quad (3.7)$$

The Yukawa’s extracted by factorization are given by

$$|Y_{000}| = g_{\text{op}} (2\pi)^{-3/4} [\Gamma_{1-a_{ab}^1, 1-a_{bc}^1, -a_{ca}^1} \Gamma_{1-a_{ab}^2, 1-a_{bc}^2, -a_{ca}^2} \Gamma_{-a_{ab}^3, -a_{bc}^3, -a_{ca}^3}]^{1/4} \prod_{I=1}^3 \exp \left[-\frac{A_{\phi\psi\chi}^{(I)}}{2\pi\alpha'} \right] \quad (3.8)$$

$$|Y_{100}| = \frac{|Y_{000}|}{\sqrt{a_{ab}^1}} [\Gamma_{1-a_{ab}^1, 1-a_{bc}^1, -a_{ca}^1}]^{1/2} \sqrt{\frac{2A_{\phi\psi\chi}^{(1)}}{\pi\alpha'}} \quad (3.9)$$

$$|Y_{200}| = \frac{|Y_{000}|}{\sqrt{2a_{ab}^1}} \Gamma_{1-a_{ab}^1, 1-a_{bc}^1, -a_{ca}^1} \left| \frac{2A_{\phi\psi\chi}^{(1)}}{\pi\alpha'} - 1 \right| \quad (3.10)$$

where $\Gamma_{a,b,c} = \frac{\Gamma(a)\Gamma(b)\Gamma(c)}{\Gamma(1-a)\Gamma(1-b)\Gamma(1-c)}$, and $A_{\phi\psi\chi}^{(I)}$ is the area of the triangle defined by the three points $f_{\psi,I}$, $f_{\chi,I}$ and $f_{\phi,I}$ in the torus I given by $A_{\phi\psi\chi}^{(I)} = \frac{\sin\pi|a_{bc}^I| \sin\pi|a_{ca}^I|}{2\sin\pi|a_{ab}^I|} f_{\chi\psi,I}^2$.

In order to evaluate the other Yukawas Y_{010} , Y_{001} etc we use supersymmetric Ward identities [1]

and we get

$$|Y_{010}| = \frac{|Y_{000}|}{\sqrt{a_{bc}^1}} [\Gamma_{1-a_{ab}^1, 1-a_{bc}^1, -a_{ca}^1}]^{1/2} \sqrt{\frac{2A_{\phi\psi\chi}^{(1)}}{\pi\alpha'}}, \quad |Y_{001}| = \frac{|Y_{000}|}{\sqrt{1+a_{ca}^3}} [\Gamma_{-a_{ab}^3, -a_{bc}^3, -a_{ca}^3}]^{1/2} \sqrt{\frac{2A_{\phi\psi\chi}^{(3)}}{\pi\alpha'}} \quad (3.11)$$

$$|Y_{020}| = \frac{|Y_{000}|}{\sqrt{2a_{bc}^1}} \Gamma_{1-a_{ab}^1, 1-a_{bc}^1, -a_{ca}^1} \left| \frac{2A_{\phi\psi\chi}^{(1)}}{\pi\alpha'} - 1 \right|, \quad |Y_{002}| = \frac{|Y_{000}|}{\sqrt{2(1+a_{ca}^3)}} \Gamma_{-a_{ab}^3, -a_{bc}^3, -a_{ca}^3} \left| \frac{2A_{\phi\psi\chi}^{(3)}}{\pi\alpha'} - 1 \right| \quad (3.12)$$

3.2 Yukawa couplings from amplitudes with massive external legs

The factorization of 4-pt amplitudes with massive external legs yields other Yukawa's that involve more than one massive particle. Following the same steps as before, we fix the normalizations of the vertex operators from amplitudes that include gauge bosons, and we evaluate Yukawa couplings with more than one massive field.

The amplitude $\mathcal{A}(\bar{\psi}_1, \psi_0, \chi_0, \bar{\chi}_0)$ reads

$$\begin{aligned} \mathcal{A}(\bar{\psi}_1, \psi_0, \chi_0, \bar{\chi}_0) &= \frac{g_{\text{op}}^2}{\sqrt{a_{bc}^1}} \alpha' \psi_0(2) \cdot \chi_0(3) \bar{\psi}_1(1) \cdot \bar{\chi}_0(4) \\ &\times \int_0^1 dx x^{\alpha's-1} (1-x)^{\alpha't-1} \prod_{I=1}^3 \frac{2\pi\sqrt{\alpha'}}{L_{c,I} G_1^{(I)}(x)} \sum_{m_I} \frac{2\pi\sqrt{\alpha'} m_I}{\sqrt{I_1(x) L_{c,I}}} e^{-S_{\text{Ham}}^{(I)}(m_I, n_I)} \end{aligned} \quad (3.13)$$

Similar to the amplitudes with massless external states, we perform a Poisson resummation over the indices m_I and obtain

$$\begin{aligned} \mathcal{A}(\bar{\psi}_1, \psi_0, \chi_0, \bar{\chi}_0) &= \frac{g_{\text{op}}^2}{\sqrt{a_{bc}^1}} \alpha' \psi_0(2) \cdot \chi_0(3) \bar{\psi}_1(1) \cdot \bar{\chi}_0(4) \int_0^1 dx x^{\alpha's-1} (1-x)^{\alpha't-3/2-a_{ab}^1} \\ &\times \frac{G_1^{(1)}(x)}{I_1(x)} \prod_{I=1}^3 \frac{1}{\sqrt{2\pi I_I(x)}} \sum_{\tilde{m}_I, n_I} \frac{\tilde{m}_I L_{c,1} + f_{\chi\psi,1}}{2\pi\sqrt{\alpha'}} e^{-S_{\text{Lagr}}^{(I)}(\tilde{m}_I, n_I)} \end{aligned} \quad (3.14)$$

In the limit $x \rightarrow 1$ the leading term is the massless pole due to the chiral exchange in the (a, b) sector. We have fixed all the normalizations that appear in the amplitudes and we already know the Yukawa's $Y_{010}^* Y_{000}$, thus factorization in this channel can be used to check that normalizations are consistent. The subleading terms determine the Yukawa Y_{110}

$$|Y_{110}| = |Y_{000}| \left| \frac{2A_{\phi\psi\chi}^{(1)}}{\pi\alpha'} - 1 \right| \frac{1}{\sqrt{a_{ab}^1 a_{bc}^1}} \Gamma_{1-a_{ab}^1, 1-a_{bc}^1, -a_{ca}^1} \quad (3.15)$$

We can obtain the Yukawas Y_{101} and Y_{011} from two amplitudes with massive bosons in the external states. As for the massless case, we can use Ward identities to relate these to amplitudes

with only fermions. The explicit expressions of the amplitudes read

$$\begin{aligned} \mathcal{A}(\bar{\chi}_1^{ac}, \chi_0^{ca}, \phi_0^{ab}, \bar{\phi}_0^{ba}) &= \frac{g_{\text{op}}^2}{\sqrt{1+a_{ca}^3}} \alpha' \bar{\chi}_1^{ac}(1) \not{k}_4 \chi_0^{ca}(2) \int_0^1 dx x^{\alpha's-1} (1-x)^{\alpha't-5/2-a_{bc}^3} \times \\ &\times \frac{G_1^{(3)}(x)}{I_3(x)} \prod_{I=1}^3 \frac{1}{\sqrt{2\pi I_I(x)}} \sum_{\tilde{m}_I, n_I} \frac{\tilde{m}_3 L_{a,3} + f_{\psi\phi,3}}{2\pi\sqrt{\alpha'}} e^{-S_{\text{Lagr}}^{(I)}(\tilde{m}_I, n_I)} \end{aligned} \quad (3.16)$$

$$\begin{aligned} \mathcal{A}(\bar{\phi}_1, \phi_0, \chi_0, \bar{\chi}_0) &= \frac{g_{\text{op}}^2}{\sqrt{a_{ab}^1}} \alpha' \bar{\chi}_0^{cb}(4) \not{k}_2 \bar{\chi}_0^{bc}(3) \int_0^1 dx x^{\alpha's-1} (1-x)^{\alpha't-5/2-a_{ca}^1} \times \\ &\times \frac{G_1^{(1)}(x)}{I_1(x)} \prod_{I=1}^3 \frac{1}{\sqrt{2\pi I_I(x)}} \sum_{\tilde{m}_I, n_I} \frac{\tilde{m}_1 L_{b,1} + f_{\chi\phi,1}}{2\pi\sqrt{\alpha'}} e^{-S_{\text{Lagr}}^{(I)}(\tilde{m}_I, n_I)} \end{aligned} \quad (3.17)$$

The limit $x \rightarrow 1$ yields two new Yukawa's

$$|Y_{011}| = \frac{|Y_{000}|}{\sqrt{a_{bc}^1(1+a_{ca}^3)}} [\Gamma_{1-a_{ab}^1, 1-a_{bc}^1, -a_{ca}^1} \Gamma_{-a_{ab}^3, -a_{bc}^3, -a_{ca}^3}]^{1/2} \sqrt{\frac{2A_{\phi\psi\chi}^{(1)}}{\pi\alpha'} \frac{2A_{\phi\psi\chi}^{(3)}}{\pi\alpha'}} \quad (3.18)$$

$$|Y_{101}| = \frac{|Y_{000}|}{\sqrt{a_{ab}^1(1+a_{ca}^3)}} [\Gamma_{1-a_{ab}^1, 1-a_{bc}^1, -a_{ca}^1} \Gamma_{-a_{ab}^3, -a_{bc}^3, -a_{ca}^3}]^{1/2} \sqrt{\frac{2A_{\phi\psi\chi}^{(1)}}{\pi\alpha'} \frac{2A_{\phi\psi\chi}^{(3)}}{\pi\alpha'}} \quad (3.19)$$

The amplitude $\mathcal{A}(\bar{\psi}_1, \psi_0, \chi_0, \bar{\chi}_1)$ allows us to determine the Yukawa's Y_{111} and Y_{211} .

$$\begin{aligned} \mathcal{A}(\bar{\psi}_1, \psi_0, \chi_0, \bar{\chi}_1) &= \frac{g_{\text{op}}^2}{\sqrt{a_{bc}^1(1+a_{ca}^3)}} \alpha' \psi_0(2) \cdot \chi_0(3) \bar{\psi}_1(1) \cdot \bar{\chi}_1(4) \int_0^1 dx x^{\alpha's-1} (1-x)^{\alpha't-1} \\ &\times \prod_{I=1}^3 \frac{4\pi^2 \sqrt{\alpha'}}{L_{c,I} G_1^{(I)}(x)} \sum_{m_I, n_I} \frac{\alpha' m_1 m_3}{\sqrt{I_1(x) I_3(x) L_{c,1} L_{c,3}}} e^{-S_{\text{Ham}}^{(I)}(m_I, n_I)} \end{aligned} \quad (3.20)$$

Once again the amplitude does not expose gauge boson exchange, since the sum over the lattice forbids it. To study the t channel we perform the usual Poisson resummation

$$\begin{aligned} \mathcal{A}(\bar{\psi}_1, \psi_0, \chi_0, \bar{\chi}_1) &= \frac{\alpha' g_{\text{op}}^2}{\sqrt{a_{bc}^1(1+a_{ca}^3)}} \psi_0(2) \cdot \chi_0(3) \bar{\psi}_1(1) \cdot \bar{\chi}_0(4) \int_0^1 dx x^{\alpha's-1} (1-x)^{\alpha't-5/2+a_{ab}^2} \\ &\times \frac{G_1^{(1)}(x) G_1^{(3)}(x)}{I_1(x) I_3(x)} \prod_{I=1}^3 \frac{1}{\sqrt{2\pi I_I(x)}} \sum_{\tilde{m}_I, n_I} \frac{(\tilde{m}_1 L_{c,1} + f_{\psi\chi,1})(\tilde{m}_3 L_{c,3} + f_{\psi\chi,3})}{4\pi^2 \alpha'} e^{-S_{\text{Lagr}}^{(I)}(\tilde{m}_I, n_I)} \end{aligned} \quad (3.21)$$

Factorizing this amplitude we obtain the Yukawa's

$$|Y_{111}| = \frac{|Y_{000}|}{\sqrt{a_{ab}^1 a_{bc}^1 (1+a_{ca}^3)}} \Gamma_{1-a_{ab}^1, 1-a_{bc}^1, -a_{ca}^1} \Gamma_{-a_{ab}^3, -a_{bc}^3, -a_{ca}^3}^{1/2} \left| \frac{2A_{\phi\psi\chi}^{(1)}}{\pi\alpha'} - 1 \right| \sqrt{\frac{2A_{\phi\psi\chi}^{(3)}}{\pi\alpha'}} \quad (3.22)$$

$$|Y_{211}| = \frac{|Y_{000}|}{\sqrt{2a_{ab}^1} \sqrt{a_{bc}^1 (1+a_{ca}^3)}} \Gamma_{1-a_{ab}^1, 1-a_{bc}^1, -a_{ca}^1} \Gamma_{-a_{ab}^3, -a_{bc}^3, -a_{ca}^3}^{1/2} \left| \frac{2A_{\phi\psi\chi}^{(1)}}{\pi\alpha'} - 3 \right| \sqrt{\frac{2A_{\phi\psi\chi}^{(1)}}{\pi\alpha'} \frac{2A_{\phi\psi\chi}^{(3)}}{\pi\alpha'}} \quad (3.23)$$

4. Conclusions

In [1] we have evaluated the Yukawa couplings between light stringy states and SM fields. Even though the tower of massive stringy states looks like KK towers, there are differences. First of all the mass gaps at KK models are typically universal. In intersecting D-brane models each tower of states lives on different intersections with unique angle and therefore unique mass gap. Second the mass gaps in KK modes are typically proportional to the moding ($\sim m/R$) whereas in intersecting D-brane models they are proportional to the square root of the moding ($\sim \sqrt{m}M_s$). Finally, interactions which are prohibited due to conservation of internal momentum (for example the decay of an excited KK mode to two unexcited modes) are allowed in intersecting D-brane models (in analogy with the previous, the Yukawa $Y_{|100|}$ is different from zero (3.9)).

Our results can be used in order to built an effective field theory including SM fields and light stringy states and study specific decays. If the string scale is at the few TeV range, decays of such particles might be the first stringy effect which might be visible at LHC or future experiments.

References

- [1] P. Anastasopoulos, M. Bianchi and D. Consoli, “Yukawa’s of light stringy states,” *Fortsch. Phys.* **65** (2017) 0110 [arXiv:1609.09299 [hep-th]].
- [2] A. Sagnotti, *Closed Strings and Their Open String Descendants*, *Phys. Rept.* **184** (1989) 167–175.
- [3] M. Bianchi and A. Sagnotti, *The Partition Function of the $SO(8192)$ Bosonic String*, *Phys. Lett.* **B211** (1988) 407.
- [4] M. Bianchi and A. Sagnotti, *THE GEOMETRY OF OPEN STRING PARTITION FUNCTIONS*, in *Theoretical Advanced Study Institute in Elementary Particle Physics: Particles, Strings and Supernovae (TASI 88) Providence, Rhode Island, June 5-July 1, 1988*, 1988.
- [5] G. Pradisi and A. Sagnotti, *Open String Orbifolds*, *Phys. Lett.* **B216** (1989) 59.
- [6] M. Bianchi and A. Sagnotti, *Open Strings and the Relative Modular Group*, *Phys. Lett.* **B231** (1989) 389.
- [7] J. Dai, R. G. Leigh, and J. Polchinski, *New Connections Between String Theories*, *Mod. Phys. Lett.* **A4** (1989) 2073–2083.
- [8] M. Bianchi and A. Sagnotti, *On the systematics of open string theories*, *Phys. Lett.* **B247** (1990) 517–524.
- [9] M. Bianchi and A. Sagnotti, *Twist symmetry and open string Wilson lines*, *Nucl. Phys.* **B361** (1991) 519–538.
- [10] M. Bianchi, G. Pradisi, and A. Sagnotti, *Planar duality in the discrete series*, *Phys. Lett.* **B273** (1991) 389–398.
- [11] M. Bianchi, G. Pradisi, and A. Sagnotti, *Toroidal compactification and symmetry breaking in open string theories*, *Nucl. Phys.* **B376** (1992) 365–386.
- [12] C. Angelantonj, M. Bianchi, G. Pradisi, A. Sagnotti, and Ya. S. Stanev, *Chiral asymmetry in four-dimensional open string vacua*, *Phys. Lett.* **B385** (1996) 96–102, [hep-th/9606169].
- [13] J. Polchinski, *Dirichlet Branes and Ramond-Ramond charges*, *Phys. Rev. Lett.* **75** (1995) 4724–4727, [hep-th/9510017].

- [14] M. Berkooz, M. R. Douglas, and R. G. Leigh, *Branes intersecting at angles*, *Nucl. Phys.* **B480** (1996) 265–278, [[hep-th/9606139](#)].
- [15] R. Blumenhagen, M. Cvetič, P. Langacker, and G. Shiu, *Toward realistic intersecting D-brane models*, *Ann.Rev.Nucl.Part.Sci.* **55** (2005) 71–139, [[hep-th/0502005](#)].
- [16] R. Blumenhagen, B. Körs, D. Lüst, and S. Stieberger, *Four-dimensional String Compactifications with D-Branes, Orientifolds and Fluxes*, *Phys.Rept.* **445** (2007) 1–193, [[hep-th/0610327](#)].
- [17] F. Marchesano, *Progress in D-brane model building*, *Fortsch.Phys.* **55** (2007) 491–518, [[hep-th/0702094](#)].
- [18] M. Cvetič and J. Halverson, *TASI Lectures: Particle Physics from Perturbative and Non-perturbative Effects in D-braneworlds*, [arXiv:1101.2907](#).
- [19] L. E. Ibanez and A. M. Uranga, *String theory and particle physics: An introduction to string phenomenology*. Cambridge University Press, 2012.
- [20] I. Antoniadis, E. Kiritsis, and T. Tomaras, *A D-brane alternative to unification*, *Phys.Lett.* **B486** (2000) 186–193, [[hep-ph/0004214](#)].
- [21] G. Aldazabal, L. E. Ibanez, F. Quevedo, and A. Uranga, *D-branes at singularities: A Bottom up approach to the string embedding of the standard model*, *JHEP* **0008** (2000) 002, [[hep-th/0005067](#)].
- [22] F. Gmeiner, R. Blumenhagen, G. Honecker, D. Lüst, and T. Weigand, *One in a billion: MSSM-like D-brane statistics*, *JHEP* **0601** (2006) 004, [[hep-th/0510170](#)].
- [23] P. Anastasopoulos, T. Dijkstra, E. Kiritsis, and A. Schellekens, *Orientifolds, hypercharge embeddings and the Standard Model*, *Nucl.Phys.* **B759** (2006) 83–146, [[hep-th/0605226](#)].
- [24] M. Cvetič, J. Halverson, and R. Richter, *Realistic Yukawa structures from orientifold compactifications*, *JHEP* **0912** (2009) 063, [[arXiv:0905.3379](#)].
- [25] M. Cvetič, J. Halverson, P. Langacker, and R. Richter, *The Weinberg Operator and a Lower String Scale in Orientifold Compactifications*, *JHEP* **1010** (2010) 094, [[arXiv:1001.3148](#)].
- [26] N. Arkani-Hamed, S. Dimopoulos, and G. Dvali, *The Hierarchy problem and new dimensions at a millimeter*, *Phys.Lett.* **B429** (1998) 263–272, [[hep-ph/9803315](#)].
- [27] I. Antoniadis, S. Dimopoulos, and G. Dvali, *Millimeter range forces in superstring theories with weak scale compactification*, *Nucl.Phys.* **B516** (1998) 70–82, [[hep-ph/9710204](#)].
- [28] I. Antoniadis, N. Arkani-Hamed, S. Dimopoulos, and G. Dvali, *New dimensions at a millimeter to a Fermi and superstrings at a TeV*, *Phys.Lett.* **B436** (1998) 257–263, [[hep-ph/9804398](#)].
- [29] E. Kiritsis and P. Anastasopoulos, *The Anomalous magnetic moment of the muon in the D-brane realization of the standard model*, *JHEP* **0205** (2002) 054, [[hep-ph/0201295](#)].
- [30] I. Antoniadis, E. Kiritsis, and J. Rizos, *Anomalous $U(1)$ s in type I superstring vacua*, *Nucl.Phys.* **B637** (2002) 92–118, [[hep-th/0204153](#)].
- [31] D. Ghilencea, L. Ibáñez, N. Irges, and F. Quevedo, *TeV scale Z-prime bosons from D-branes*, *JHEP* **0208** (2002) 016, [[hep-ph/0205083](#)].
- [32] P. Anastasopoulos, *4-D anomalous $U(1)$'s, their masses and their relation to 6-D anomalies*, *JHEP* **0308** (2003) 005, [[hep-th/0306042](#)].

- [33] P. Anastasopoulos, *Anomalous $U(1)$ s masses in nonsupersymmetric open string vacua*, *Phys.Lett.* **B588** (2004) 119–126, [[hep-th/0402105](#)].
- [34] P. Burikham, T. Figy, and T. Han, *TeV-scale string resonances at hadron colliders*, *Phys.Rev.* **D71** (2005) 016005, [[hep-ph/0411094](#)].
- [35] C. Corianò, N. Irges, and E. Kiritsis, *On the effective theory of low scale orientifold string vacua*, *Nucl.Phys.* **B746** (2006) 77–135, [[hep-ph/0510332](#)].
- [36] P. Anastasopoulos, M. Bianchi, E. Dudas, and E. Kiritsis, *Anomalies, anomalous $U(1)$'s and generalized Chern-Simons terms*, *JHEP* **0611** (2006) 057, [[hep-th/0605225](#)].
- [37] P. Anastasopoulos, F. Fucito, A. Lionetto, G. Pradisi, A. Racioppi, and Y. Stanev, *Minimal Anomalous $U(1)$ -prime Extension of the MSSM*, *Phys.Rev.* **D78** (2008) 085014, [[arXiv:0804.1156](#)].
- [38] R. Armillis, C. Coriano, M. Guzzi, and S. Morelli, *An Anomalous Extra Z Prime from Intersecting Branes with Drell-Yan and Direct Photons at the LHC*, *Nucl.Phys.* **B814** (2009) 156–179, [[arXiv:0809.3772](#)].
- [39] F. Fucito, A. Lionetto, A. Mammarella, and A. Racioppi, *Stueckelino dark matter in anomalous $U(1)$ -prime models*, *Eur.Phys.J.* **C69** (2010) 455–465, [[arXiv:0811.1953](#)].
- [40] L. A. Anchordoqui, H. Goldberg, X. Huang, D. Lüst, and T. R. Taylor, *Stringy origin of Tevatron W_{jj} anomaly*, *Phys.Lett.* **B701** (2011) 224–228, [[arXiv:1104.2302](#)].
- [41] L. A. Anchordoqui, I. Antoniadis, H. Goldberg, X. Huang, D. Lüst, and T. Taylor, *Z' -gauge Bosons as Harbingers of Low Mass Strings*, *Phys.Rev.* **D85** (2012) 086003, [[arXiv:1107.4309](#)].
- [42] L. A. Anchordoqui, I. Antoniadis, H. Goldberg, X. Huang, D. Lüst, T. Taylor, and B. Vlcek, *LHC Phenomenology and Cosmology of String-Inspired Intersecting D-Brane Models*, *Phys.Rev.* **D86** (2012) 066004, [[arXiv:1206.2537](#)].
- [43] E. Dudas and J. Mourad, *String theory predictions for future accelerators*, *Nucl.Phys.* **B575** (2000) 3–34, [[hep-th/9911019](#)].
- [44] E. Accomando, I. Antoniadis, and K. Benakli, *Looking for TeV scale strings and extra dimensions*, *Nucl.Phys.* **B579** (2000) 3–16, [[hep-ph/9912287](#)].
- [45] S. Cullen, M. Perelstein, and M. E. Peskin, *TeV strings and collider probes of large extra dimensions*, *Phys.Rev.* **D62** (2000) 055012, [[hep-ph/0001166](#)].
- [46] C. Burgess, J. Matias, and F. Quevedo, *MSLED: A Minimal supersymmetric large extra dimensions scenario*, *Nucl.Phys.* **B706** (2005) 71–99, [[hep-ph/0404135](#)].
- [47] D. Chialva, R. Iengo, and J. G. Russo, *Cross sections for production of closed superstrings at high energy colliders in brane world models*, *Phys.Rev.* **D71** (2005) 106009, [[hep-ph/0503125](#)].
- [48] M. Cicoli, C. Burgess, and F. Quevedo, *Anisotropic Modulus Stabilisation: Strings at LHC Scales with Micron-sized Extra Dimensions*, *JHEP* **1110** (2011) 119, [[arXiv:1105.2107](#)].
- [49] D. Chialva, P. B. Dev, and A. Mazumdar, *Multiple dark matter scenarios from ubiquitous stringy throats*, *Phys.Rev.* **D87** (2013), no. 6 063522, [[arXiv:1211.0250](#)].
- [50] M. Bianchi and A. V. Santini, *String predictions for near future colliders from one-loop scattering amplitudes around D-brane worlds*, *JHEP* **0612** (2006) 010, [[hep-th/0607224](#)].
- [51] L. A. Anchordoqui, H. Goldberg, S. Nawata, and T. R. Taylor, *Jet signals for low mass strings at the LHC*, *Phys.Rev.Lett.* **100** (2008) 171603, [[arXiv:0712.0386](#)].

- [52] L. A. Anchordoqui, H. Goldberg, S. Nawata, and T. R. Taylor, *Direct photons as probes of low mass strings at the CERN LHC*, *Phys.Rev.* **D78** (2008) 016005, [[arXiv:0804.2013](#)].
- [53] D. Lüst, S. Stieberger, and T. R. Taylor, *The LHC String Hunter's Companion*, *Nucl.Phys.* **B808** (2009) 1–52, [[arXiv:0807.3333](#)].
- [54] L. A. Anchordoqui, H. Goldberg, D. Lüst, S. Nawata, S. Stieberger, and T. Taylor, *Dijet signals for low mass strings at the LHC*, *Phys.Rev.Lett.* **101** (2008) 241803, [[arXiv:0808.0497](#)].
- [55] L. A. Anchordoqui, H. Goldberg, D. Lüst, S. Stieberger, and T. R. Taylor, *String Phenomenology at the LHC*, *Mod.Phys.Lett.* **A24** (2009) 2481–2490, [[arXiv:0909.2216](#)].
- [56] D. Lüst, O. Schlotterer, S. Stieberger, and T. Taylor, *The LHC String Hunter's Companion (II): Five-Particle Amplitudes and Universal Properties*, *Nucl.Phys.* **B828** (2010) 139–200, [[arXiv:0908.0409](#)].
- [57] L. A. Anchordoqui, H. Goldberg, D. Lüst, S. Nawata, S. Stieberger, and T. Taylor, *LHC Phenomenology for String Hunters*, *Nucl.Phys.* **B821** (2009) 181–196, [[arXiv:0904.3547](#)].
- [58] L. A. Anchordoqui, W.-Z. Feng, H. Goldberg, X. Huang, and T. R. Taylor, *Searching for string resonances in $e^+ e^-$ and $\gamma\gamma$ collisions*, *Phys.Rev.* **D83** (2011) 106006, [[arXiv:1012.3466](#)].
- [59] W.-Z. Feng, D. Lüst, O. Schlotterer, S. Stieberger, and T. R. Taylor, *Direct Production of Lightest Regge Resonances*, *Nucl.Phys.* **B843** (2011) 570–601, [[arXiv:1007.5254](#)].
- [60] Z. Dong, T. Han, M.-x. Huang, and G. Shiu, *Top Quarks as a Window to String Resonances*, *JHEP* **1009** (2010) 048, [[arXiv:1004.5441](#)].
- [61] D. Carmi, *TeV Scale Strings and Scattering Amplitudes at the LHC*, [arXiv:1109.5161](#).
- [62] M. Hashi and N. Kitazawa, *Detectability of the second resonance of low-scale string models at the LHC*, *JHEP* **1303** (2013) 127, [[arXiv:1212.5372](#)].
- [63] L. A. Anchordoqui, I. Antoniadis, D.-C. Dai, W.-Z. Feng, H. Goldberg, *et. al.*, *String Resonances at Hadron Colliders*, [arXiv:1407.8120](#).
- [64] D. Lüst and T. R. Taylor, *Limits on Stringy Signals at the LHC*, [arXiv:1308.1619](#).
- [65] D. Berenstein, *TeV-Scale strings*, [arXiv:1401.4491](#).
- [66] P. Anastasopoulos, M. Bianchi, and R. Richter, *Light stringy states*, *JHEP* **1203** (2012) 068, [[arXiv:1110.5424](#)].
- [67] P. Anastasopoulos, M. Bianchi, and R. Richter, *On closed-string twist-field correlators and their open-string descendants*, [arXiv:1110.5359](#).
- [68] P. Anastasopoulos and R. Richter, *Production of light stringy states*, *JHEP* **12** (2014) 059, [[arXiv:1408.4810](#)].
- [69] P. Anastasopoulos and R. Richter, *Twisted state production*, *PoS CORFU2014* (2015) 116.
- [70] P. Anastasopoulos and M. Bianchi, *Revisiting light stringy states in view of the 750 GeV diphoton excess*, [arXiv:1601.0758](#).
- [71] P. Anastasopoulos, M. D. Goodsell, and R. Richter, *Three- and Four-point correlators of excited bosonic twist fields*, *JHEP* **10** (2013) 182, [[arXiv:1305.7166](#)].
- [72] R. Blumenhagen, L. Görlich, B. Körs, and D. Lüst, *Noncommutative compactifications of type I strings on tori with magnetic background flux*, *JHEP* **0010** (2000) 006, [[hep-th/0007024](#)].

- [73] C. Angelantonj, I. Antoniadis, E. Dudas, and A. Sagnotti, *Type I strings on magnetized orbifolds and brane transmutation*, *Phys.Lett.* **B489** (2000) 223–232, [[hep-th/0007090](#)].
- [74] G. Aldazabal, S. Franco, L. E. Ibáñez, R. Rabadán, and A. Uranga, *Intersecting brane worlds*, *JHEP* **0102** (2001) 047, [[hep-ph/0011132](#)].
- [75] G. Aldazabal, S. Franco, L. E. Ibáñez, R. Rabadán, and A. Uranga, *D = 4 chiral string compactifications from intersecting branes*, *J.Math.Phys.* **42** (2001) 3103–3126, [[hep-th/0011073](#)].
- [76] S. Förste, G. Honecker, and R. Schreyer, *Supersymmetric $Z(N) \times Z(M)$ orientifolds in 4-D with D branes at angles*, *Nucl.Phys.* **B593** (2001) 127–154, [[hep-th/0008250](#)].
- [77] L. E. Ibáñez, F. Marchesano, and R. Rabadán, *Getting just the standard model at intersecting branes*, *JHEP* **0111** (2001) 002, [[hep-th/0105155](#)].
- [78] M. Cvetič, G. Shiu, and A. M. Uranga, *Three family supersymmetric standard - like models from intersecting brane worlds*, *Phys.Rev.Lett.* **87** (2001) 201801, [[hep-th/0107143](#)].
- [79] M. Cvetič, G. Shiu, and A. M. Uranga, *Chiral four-dimensional $N=1$ supersymmetric type 2A orientifolds from intersecting D6 branes*, *Nucl.Phys.* **B615** (2001) 3–32, [[hep-th/0107166](#)].
- [80] G. Honecker, *Chiral supersymmetric models on an orientifold of $Z(4) \times Z(2)$ with intersecting D6-branes*, *Nucl.Phys.* **B666** (2003) 175–196, [[hep-th/0303015](#)].
- [81] M. Cvetič, P. Langacker, T.-j. Li, and T. Liu, *D6-brane splitting on type IIA orientifolds*, *Nucl.Phys.* **B709** (2005) 241–266, [[hep-th/0407178](#)].
- [82] G. Honecker, *Chiral $N=1$ 4-D orientifolds with D-branes at angles*, *Mod.Phys.Lett.* **A19** (2004) 1863–1879, [[hep-th/0407181](#)].
- [83] G. Honecker and T. Ott, *Getting just the supersymmetric standard model at intersecting branes on the $Z(6)$ orientifold*, *Phys.Rev.* **D70** (2004) 126010, [[hep-th/0404055](#)].
- [84] R. Blumenhagen, F. Gmeiner, G. Honecker, D. Lüst, and T. Weigand, *The Statistics of supersymmetric D-brane models*, *Nucl.Phys.* **B713** (2005) 83–135, [[hep-th/0411173](#)].
- [85] R. Blumenhagen, M. Cvetič, F. Marchesano, and G. Shiu, *Chiral D-brane models with frozen open string moduli*, *JHEP* **0503** (2005) 050, [[hep-th/0502095](#)].
- [86] D. Bailin and A. Love, *Towards the supersymmetric standard model from intersecting D6-branes on the Z -prime(6) orientifold*, *Nucl.Phys.* **B755** (2006) 79–111, [[hep-th/0603172](#)].
- [87] M. Cvetič and P. Langacker, *New Grand Unified Models with Intersecting D6-branes, Neutrino Masses, and Flipped $SU(5)$* , *Nucl.Phys.* **B776** (2007) 118–137, [[hep-th/0607238](#)].
- [88] C.-M. Chen, T. Li, V. Mayes, and D. V. Nanopoulos, *A Realistic world from intersecting D6-branes*, *Phys.Lett.* **B665** (2008) 267–270, [[hep-th/0703280](#)].
- [89] D. Bailin and A. Love, *Almost the supersymmetric standard model from intersecting D6-branes on the $Z(6)$ -prime orientifold*, *Phys.Lett.* **B651** (2007) 324–328, [[arXiv:0705.0646](#)].
- [90] F. Gmeiner and G. Honecker, *Mapping an Island in the Landscape*, *JHEP* **0709** (2007) 128, [[arXiv:0708.2285](#)].
- [91] D. Bailin and A. Love, *Constructing the supersymmetric Standard Model from intersecting D6-branes on the $Z(6)$ -prime orientifold*, *Nucl.Phys.* **B809** (2009) 64–109, [[arXiv:0801.3385](#)].

- [92] F. Gmeiner and G. Honecker, *Millions of Standard Models on Z-prime(6)?*, *JHEP* **0807** (2008) 052, [[arXiv:0806.3039](#)].
- [93] G. Honecker, M. Ripka, and W. Staessens, *The Importance of Being Rigid: D6-Brane Model Building on $T^6/Z_2 \times Z'_6$ with Discrete Torsion*, *Nucl.Phys.* **B868** (2013) 156–222, [[arXiv:1209.3010](#)].
- [94] G. Honecker and W. Staessens, *D6-Brane Model Building and Discrete Symmetries on $T^6/(Z_2 \times Z_6 \times \Omega R)$ with Discrete Torsion*, *PoS Corfu2012* (2013) 107, [[arXiv:1303.6845](#)].