

## Magnetization and pressures at nonzero magnetic fields in QCD

---

**G. S. Bali<sup>1,2</sup>, F. Bruckmann<sup>1</sup>, G. Endrődi<sup>\*1</sup>, A. Schäfer<sup>1</sup>**

*E-mail:* [gergely.endrodi@physik.uni-regensburg.de](mailto:gergely.endrodi@physik.uni-regensburg.de)

Two approaches are pursued to determine the magnetization of the QCD vacuum at zero and nonzero temperatures using lattice simulations. The first method builds on pressure anisotropies which are induced by the magnetic field on the lattice. The second approach is a novel, generalized version of the integral method, which exploits the independence of the theory on  $B$  for asymptotically large quark masses. Both approaches give consistent results and confirm that the QCD medium is paramagnetic. Finally, an interesting relation between QCD paramagnetism, magnetic catalysis of the QCD condensate and the QED  $\beta$ -function is pointed out.

*31st International Symposium on Lattice Field Theory LATTICE 2013*

*July 29 – August 3, 2013*

*Mainz, Germany*

---

<sup>1</sup>Institute for Theoretical Physics, Universität Regensburg, D-93040 Regensburg, Germany.

<sup>2</sup>Dept. of Theoretical Physics, Tata Institute of Fundamental Research, Homi Bhabha Road, Mumbai 400005, India.

\*Speaker.

## 1. Introduction

Strong (electro)magnetic fields are very efficient probes of the thermal vacuum of Quantum Chromodynamics (QCD). Given the electrically charged nature of quarks and the electric neutrality of gluons, magnetic fields effectively disentangle the elementary particles of the theory, if the field competes in strength with the QCD interactions. This implies that a magnetic field of the order of several  $m_\pi^2$  is necessary. Such a strong magnetic field can indeed induce several new phenomena, for example it generates Lorentz-symmetry-breaking expectation values, it affects chiral symmetry breaking and restoration and (de)confinement, and it considerably changes the hadron spectrum. For recent reviews on the subject, see, e.g., Refs. [1, 2]. Remarkably, magnetic fields of this strength occur in nature (in magnetars [3] and during the electroweak epoch of the evolution of the early universe [4]) and in experiments (relativistic heavy-ion collisions [5]), making the study of QCD with magnetic fields relevant for these systems.

All information about the magnetic properties of QCD is contained in the free energy of the system, which is given in terms of the partition function as  $F = -T \cdot \log Z$ . The response to the magnetic field is given by the magnetization density,

$$M = -\frac{1}{V} \frac{\partial F}{\partial (eB)}, \quad (1.1)$$

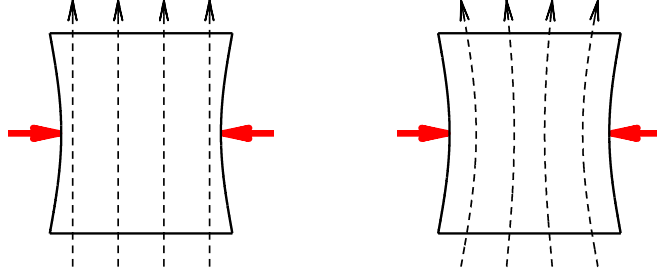
where the magnetic field is given in units of the elementary charge  $e > 0$ . In particular, a positive magnetization implies that the QCD vacuum as a medium is a paramagnet, whereas the opposite sign corresponds to diamagnetism. While paramagnets decrease their free energy when exposed to an external field, for diamagnets it is energetically favorable to repel the magnetic field. Thus, the sign of  $M$  is clearly a fundamental characteristic of the thermal QCD vacuum.

The dependence of  $F$  on  $B$  is also important for the determination of the QCD equation of state (EoS) in the presence of the magnetic field. For the EoS, the primary observable is the pressure. For nonzero magnetic fields, the direction parallel to  $B$  is distinguished and, in principle, the spatial components of the pressure may become different. To be more specific, let us consider a finite volume of size  $V = L_x L_y L_z$ , for which the pressure components are written as

$$p_i = -\frac{1}{V} L_i \frac{\partial F}{\partial L_i}. \quad (1.2)$$

Applying the magnetic field in the  $z$  direction induces a magnetic flux  $\Phi = eB \cdot L_x L_y$ . To define the pressures we have to specify the trajectory in parameter space, along which the partial derivative in Eq. (1.2) is evaluated. Two possibilities are, for example, to keep the magnetic field constant ( $B$ -scheme) or, to keep the magnetic flux constant ( $\Phi$ -scheme) [6]. In the  $B$ -scheme, compressing the system in the transverse ( $x$  or  $y$ ) directions decreases the flux, whereas in the  $\Phi$  scheme, the same compression increases the magnetic field. The two scenarios are illustrated in Fig. 1.

Let us consider a large homogeneous system, where the free energy is extensive,  $F(L_i, eB, T) = V \cdot \Omega(eB, T)$  (such an extensive free energy describes, for example, free charged particles, see, e.g., Ref. [7]). In the  $B$ -scheme, the spatial extensions only appear in the prefactor, therefore, the pressures will be *isotropic*. In the  $\Phi$ -scheme, on the other hand, the transverse derivatives of  $F(L_i, \Phi, T) = V \cdot \Omega(\Phi/(L_x L_y), T)$  become different, resulting in *anisotropic* pressures. Since the



**Figure 1:** Two possible scenarios for defining the transverse pressures in the presence of a magnetic field: keeping either the field constant ( $B$ -scheme, left panel) or the flux constant ( $\Phi$ -scheme, right panel).

additional dependence on  $L_x$  and  $L_y$  is through the  $B$ -dependence of  $F$ , the anisotropy is proportional to the magnetization, Eq. (1.1). On the contrary, the longitudinal pressure  $p_z$  is the same in both schemes. Altogether, we obtain in the two schemes

$$p_{x,y}^{(B)} = p_z, \quad p_{x,y}^{(\Phi)} = p_z - M \cdot eB, \quad (1.3)$$

and in the thermodynamic limit, the longitudinal pressure is given as  $p_z = -F/V = T/V \cdot \log Z$ . Let us stress that there is no ‘correct’ scheme; which trajectory  $B(L_i)$  one should choose to evaluate the pressures depends on the physical situation in question. The above introduced  $B$ - and  $\Phi$ -schemes are merely two possibilities. One example for the  $\Phi$ -scheme is a perfectly conducting plasma, where magnetic field lines are frozen in and, therefore, flux is conserved.

Another important aspect of the magnetic field-dependence of the free energy is its renormalization. Besides the  $B = 0$  divergences of  $F$ , the magnetic field induces an additional divergent term of the form  $\beta_1 \cdot (eB)^2 \cdot \log \Lambda$ , where the regulator  $\Lambda$  of the theory is to be taken to infinity. The coefficient  $\beta_1$  equals the leading order coefficient of the QED  $\beta$ -function (with QCD corrections). This is no coincidence, as this divergence stems from the electromagnetic interaction of the quarks with the magnetic field and can be canceled by the simultaneous renormalization of the electric charge  $e$  and of the magnetic field  $B$ . For  $F$ , this corresponds to a redefinition of the energy  $B^2/2$  of the magnetic field,

$$\frac{B^2}{2} + \beta_1 \cdot (eB)^2 \cdot \log \Lambda = \frac{B'^2}{2}, \quad (1.4)$$

and coincides with the usual wave-function renormalization  $B^2 = Z_e B'^2$ , where the superscript indicates that  $B'$  is a renormalized quantity. Note that the electric charge renormalizes as  $e^2 = Z_e^{-1} e'^2$  and, thus, their product is invariant,  $eB = e'B'$ .

In the on-shell scheme, the renormalization of Eq. (1.4) amounts to a complete subtraction of the  $\mathcal{O}((eB)^2)$  term in  $F$  at  $T = 0$  (and a similar prescription for  $M$  and for the pressures) [8, 7],

$$F^r = (1 - \mathcal{P})[F], \quad M^r \cdot eB = (1 - \mathcal{P})[M \cdot eB], \quad p_z^r = (1 - \mathcal{P})[p_z], \quad (1.5)$$

where  $\mathcal{P}$  is the operator that projects out the  $\mathcal{O}((eB)^2)$  term from a quantity  $X$ ,

$$\mathcal{P}[X] = (eB)^2 \lim_{eB \rightarrow 0} \frac{X}{(eB)^2}. \quad (1.6)$$

Therefore, at  $T = 0$  the expansion of  $F^r$  in  $eB$  starts with a quartic term. On the other hand, thermal contributions at  $T > 0$  induce a nonzero quadratic term as well. Note that other observables, like the condensate (see definition (3.1) below) are not affected by this renormalization.

## 2. Magnetization on the lattice – pressure anisotropies

In the rest of this talk, two independent approaches will be discussed, which can be used to determine the QCD magnetization in lattice simulations. Our numerical results were obtained using a Symanzik improved gauge action and 2 + 1 flavors of stout smeared staggered quarks with physical masses (the setup is detailed in Refs. [9, 10]). On a finite lattice of size  $N_s^3 \times N_t$  and spacing  $a$ , the magnetic field is not arbitrary but quantized due to periodic boundary conditions,

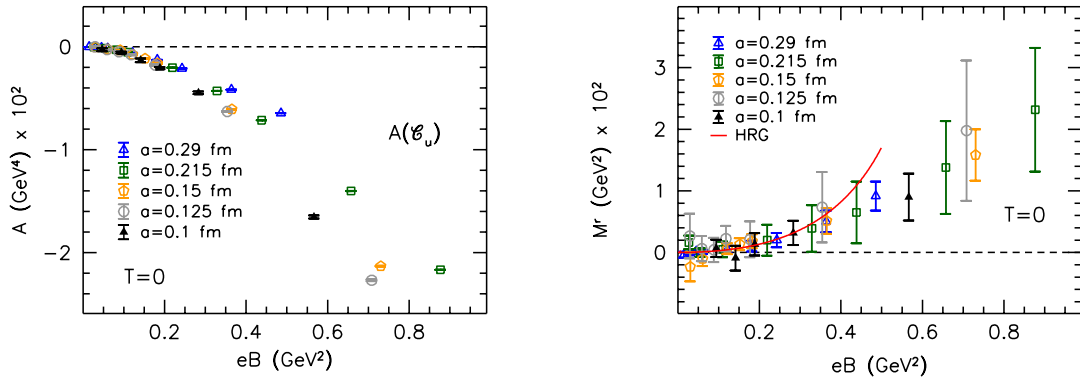
$$\Phi = eB \cdot (N_s a)^2 = 6\pi N_b, \quad N_b \in \mathbb{Z}, \quad 0 \leq N_b < N_s^2. \quad (2.1)$$

Here we have taken into account that the magnitude of the smallest quark electric charge is  $e/3$ .

Flux quantization implies that the magnetization of Eq. (1.1) is ill-defined. The first approach to circumvent this problem was developed in Ref. [6]. It is based on the fact that the lattice setup described above with constant  $N_b$  realizes the  $\Phi$ -scheme. Thus, the second relation in Eq. (1.3) can be employed to determine  $M$ . Moreover, in Ref. [6] we have also shown how to write the difference between the pressure components as anisotropies of the lattice action, giving the relation

$$-M \cdot eB = -(\zeta_g + \hat{\zeta}_g) [A(\mathcal{B}) - A(\mathcal{E})] - \zeta_f \sum_f A(\mathcal{C}_f). \quad (2.2)$$

Here,  $A(\mathcal{E})$  and  $A(\mathcal{B})$  are anisotropies of the chromoelectric and chromomagnetic parts of the gluonic action and  $A(\mathcal{C}_f)$  is the anisotropy of the fermionic action for the flavor  $f$  ( $f = u, d, s$ ). The coefficients  $\zeta_g$ ,  $\hat{\zeta}_g$  and  $\zeta_f$  are anisotropy renormalization coefficients, which in principle should be determined non-perturbatively, e.g., through simulations on anisotropic lattices. This is a highly complicated and expensive task. For the moment, we substitute these coefficients by their leading perturbative values,  $\zeta_g = \hat{\zeta}_g = \zeta_f = 1$ . Moreover, since we found that the right hand side of Eq. (2.2) is dominated by the fermionic anisotropy, in the following we estimate the magnetization by considering simply  $\sum_f A(\mathcal{C}_f)$ . This amounts to a systematic error of about 10 – 20%. For the derivation of Eq. (2.2) and additional details, see Ref. [6].



**Figure 2:** Left panel: up quark contribution to the unrenormalized magnetization at  $T = 0$ , for various lattice spacings (colored points). Right panel: renormalized magnetization on the lattice (colored points), and the hadron resonance gas (HRG) model prediction (solid red line).

The contribution of the up quark to  $M \cdot eB$  is shown in the left panel of Fig. 2 for several lattice spacings at  $T = 0$ . The magnetization is still subject to the additive renormalization as given in

Eq. (1.5). We observe that the renormalized results obtained at five different lattice spacings agree within their statistical errors, see right panel of the same figure. The results indicate that  $M^r > 0$ , i.e. the zero-temperature QCD vacuum is paramagnetic. The lattice data are also compared here to the hadron resonance gas (HRG) model prediction [7], revealing a nice agreement for  $eB \lesssim 0.4 \text{ GeV}^2$ .

### 3. Magnetization on the lattice – generalized integral method

We proceed by considering an alternative method for the determination of  $M^r$ , or, equivalently, of the dependence of the (longitudinal) pressure  $p_z = T/V \cdot \log Z$  on the magnetic field. We consider the integral method, where the pressure is written as a multidimensional integral of the partial derivatives of  $\log Z$  with respect to the parameters of the theory – the inverse gauge coupling  $\beta$ , the bare quark masses  $m_f$  and the magnetic flux  $N_b$ . The derivatives with respect to the masses are the quark condensates,

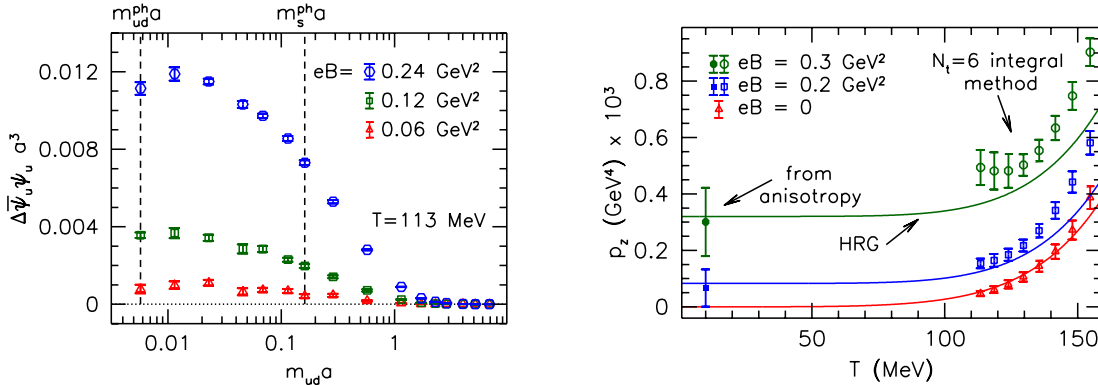
$$\bar{\psi}_f \psi_f = \frac{1}{N_s^3 N_t} \frac{\partial \log Z}{\partial m_f}. \quad (3.1)$$

Moreover, let us define  $\Delta$  as the difference between an observable at  $N_b$  and at  $N_b = 0$ .

Flux quantization again represents a conceptual obstacle, as it prohibits directly performing the integral on trajectories in parameter space, along which the magnetic flux changes. To overcome this issue, we propose to consider the trajectory with starting point at infinitely heavy quark masses. Since QCD with  $m_f = \infty$  corresponds to pure gauge theory, a magnetic field has no effect here, and thus,  $\Delta p_z = 0$ . Integrating down from infinity to the physical quark mass  $m_f^{\text{ph}}$  allows to extract  $\Delta p_z$  at any  $N_b$  and any  $T$  as

$$\Delta p_z = - \sum_f \int_{m_f^{\text{ph}}}^{\infty} dm_f \Delta \bar{\psi}_f \psi_f, \quad (3.2)$$

which is independent of the integration path. In practice we first integrate in the two light sectors up to the symmetric point ( $N_f = 3$  theory with different quark charges). Second we integrate in all three sectors up to  $m_f = \infty$ . The contribution of the up quark is shown in the left panel of Fig. 3.



**Figure 3:** Left panel: change in the up quark condensate induced by  $B$  as function of the quark mass on the  $N_t = 6$  lattices at  $T = 113 \text{ MeV}$  (different colors encode different magnetic fields). Right panel: QCD pressure at nonzero magnetic fields from two lattice approaches and the HRG model.

Once  $\Delta p_z$  is known at one  $T$  and one  $N_b$ , one can integrate in  $\beta$  along a trajectory at that fixed  $N_b$  to determine the temperature-dependence of  $\Delta p_z$ . The renormalization is performed according

to Eq. (1.5) to obtain the renormalized change in the pressure  $\Delta p_z^r(N_b)$ . An additional interpolation is necessary to obtain  $\Delta p_z^r(eB)$ . Shifting this by the pressure at  $B = 0$ , which we take from Ref. [11], completes the determination of the EoS at nonzero magnetic fields. The so obtained pressure is shown in the right panel of Fig. 3 at low temperatures on our  $N_t = 6$  lattices, and compared to the anisotropy method of Sec. 2 and the HRG model prediction [7]. The results consistently show that the pressure is increased by  $B$  and, accordingly, the thermal QCD vacuum is *paramagnetic* (moreover,  $M^r$  increases as  $T$  grows). We note that recently two other approaches have also been developed to determine the magnetization at  $T > 0$ , giving qualitatively consistent results [12].

#### 4. Magnetic catalysis, QCD paramagnetism and the QED $\beta$ -function

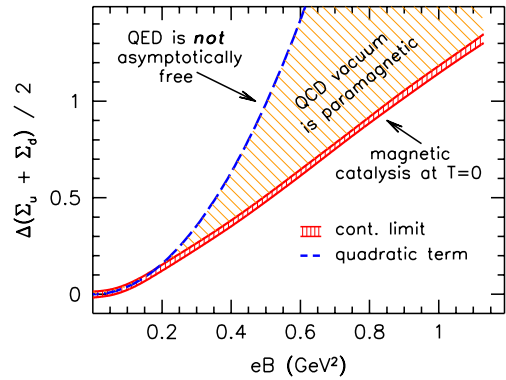
Finally, we would like to point out a relation between three, seemingly unrelated phenomena at zero temperature: 1) the magnetic catalysis [13] of the quark condensates, 2) the paramagnetism of the QCD vacuum and 3) the positivity of the QED  $\beta$ -function. Let us consider Eq. (3.2) at  $T = 0$ , and apply to both of its sides the projection operator  $\mathcal{P}$  (see definition in Eq. (1.6)) and  $1 - \mathcal{P}$ ,

$$\mathcal{P}[\Delta p_z] = -\sum_f \int_{m_f^{\text{ph}}}^{\infty} dm_f \mathcal{P}[\Delta \bar{\psi}_f \psi_f], \quad (1 - \mathcal{P})[\Delta p_z] = -\sum_f \int_{m_f^{\text{ph}}}^{\infty} dm_f (1 - \mathcal{P})[\Delta \bar{\psi}_f \psi_f]. \quad (4.1)$$

The left-hand side of the first equation contains the  $\mathcal{O}((eB)^2)$  term in the zero-temperature pressure, which – according to our arguments in Eq. (1.5) – is just the term that is subtracted via charge renormalization and equals  $-\beta_1 \cdot (eB)^2 \cdot \log a^{-1}$  (on the lattice  $\Lambda = a^{-1}$ ). Would QED be asymptotically free ( $\beta_1 < 0$ ), the condensate would have to decrease with  $eB$  to leading order in some mass regions to make the right hand side positive. The  $\mathcal{O}((eB)^2)$  magnetic catalysis of the condensate for any  $m_f^{\text{ph}}$  is thus consistent with  $\beta_1 > 0$  (which is expected even with QCD corrections; the leading perturbative corrections are also positive [14]). Since the lattice regularization provides the upper limit  $1/a$  for the integration in the mass, this relation also implies that the integral is logarithmically divergent, i.e.  $\mathcal{P}[\Delta \bar{\psi}_f \psi_f]$  decays as  $1/m_f$  for large masses.

Let us now turn to the second relation in Eq. (4.1). This time, the integrand on the right-hand side is the change in the condensate, minus its quadratic part. From our lattice measurements of magnetic catalysis we see that the condensate as function of  $eB$  tends to ‘straighten out’ and lies below its quadratic part [15], see Fig. 4. We also found that this behavior is general for any value of  $m_f$ . Therefore, the right-hand side of the equation is positive. The left-hand side, on the other hand, contains the renormalized change in the pressure,  $\Delta p_z^r$ , according to Eq. (1.5). It also has to be positive, therefore QCD at  $T = 0$  is *paramagnetic*. This is indicated by the yellow shaded region in Fig. 4.

Note that the above arguments concern the behavior of the condensate and of the pressure at  $T = 0$ . At finite temperatures both  $\Delta p_z$  and  $\Delta \bar{\psi}_f \psi_f$  receive finite contributions quadratic in the



**Figure 4:** The relation between different concepts: QED  $\beta$ -function, magnetic catalysis of the condensates and QCD paramagnetism.

magnetic field, which are unrelated to charge renormalization. In particular, these contributions induce the inverse magnetic catalysis of the condensate [15, 16] in the transition region  $T \approx T_c$ , which is responsible for the reduction of the chiral crossover temperature with growing  $eB$  [10].

## 5. Summary

In this talk we presented two independent approaches to determine the magnetization and the pressure at nonzero magnetic fields. Both the ‘anisotropy method’ and the ‘generalized integral method’ indicate the QCD vacuum to be paramagnetic at  $T = 0$  and at  $T > 0$ . Furthermore, we have shown that the positivity of the QED  $\beta$ -function is related to the  $\mathcal{O}((eB)^2)$  magnetic catalysis of  $\bar{\psi}_f \psi_f$  at  $T = 0$ . This correspondence was already discussed along similar lines in the HRG model [7]. The negativity of the higher order terms in the condensate, on the other hand, establishes the paramagnetic nature of QCD at  $T = 0$ . This is summarized in Fig. 4.

**Acknowledgements.** This work was supported by the DFG (SFB/TR 55) and the EU (ITN STRONGnet 238353). G. E. thanks Sándor Katz, Igor Shovkovy and Kálmán Szabó for enlightening discussions.

## References

- [1] D. E. Kharzeev, K. Landsteiner, A. Schmitt, and H.-U. Yee *Lect.Notes Phys.* **871** (2013) 1–11, [[arXiv:1211.6245](#)].
- [2] G. Bali, F. Bruckmann, M. Constantinou, M. Costa, G. Endrődi, et al. *PoS ConfinementX* (2012) 198, [[arXiv:1301.5826](#)].
- [3] R. C. Duncan and C. Thompson *Astrophys. J.* **392** (1992) L9.
- [4] D. Grasso and H. R. Rubinstein *Phys.Rept.* **348** (2001) 163–266, [[astro-ph/0009061](#)].
- [5] V. Skokov, A. Y. Illarionov, and V. Toneev *Int. J. Mod. Phys. A* **24** (2009) 5925, [[arXiv:0907.1396](#)].
- [6] G. Bali, F. Bruckmann, G. Endrődi, F. Gruber, and A. Schäfer *JHEP* **1304** (2013) 130, [[arXiv:1303.1328](#)].
- [7] G. Endrődi *JHEP* **1304** (2013) 023, [[arXiv:1301.1307](#)].
- [8] P. Elmfors, D. Persson, and B.-S. Skagerstam *Phys.Rev.Lett.* **71** (1993) 480–483, [[hep-th/9305004](#)]; G. V. Dunne [hep-th/0406216](#).
- [9] Y. Aoki, Z. Fodor, S. D. Katz, and K. K. Szabó *JHEP* **01** (2006) 089, [[hep-lat/0510084](#)].
- [10] G. Bali, F. Bruckmann, G. Endrődi, Z. Fodor, et al. *JHEP* **1202** (2012) 044, [[arXiv:1111.4956](#)].
- [11] S. Borsányi, G. Endrődi, Z. Fodor, A. Jakovác, et al. *JHEP* **1011** (2010) 077, [[arXiv:1007.2580](#)].
- [12] C. Bonati, M. D’Elia, M. Mariti, F. Negro, and F. Sanfilippo [arXiv:1307.8063](#); L. Levkova and C. DeTar [arXiv:1309.1142](#).
- [13] I. A. Shovkovy *Lect.Notes Phys.* **871** (2013) 13–49, [[arXiv:1207.5081](#)].
- [14] P. Baikov, K. Chetyrkin, J. Kuhn, and J. Rittinger *JHEP* **1207** (2012) 017, [[arXiv:1206.1284](#)].
- [15] G. Bali, F. Bruckmann, G. Endrődi, et al. *Phys. Rev.* **D86** (2012) 071502, [[arXiv:1206.4205](#)].
- [16] F. Bruckmann, G. Endrődi, and T. G. Kovács *JHEP* **1304** (2013) 112, [[arXiv:1303.3972](#)].